

Exploring Urban Greenery: A Case Study of Roadside Trees in Pokhara Metropolitan City

Aashish Gautam, Nepal

Abstract

Roadside trees play a crucial role as important components of urban greenery, significantly enhancing the overall quality of cities and ultimately contributing to the quality of life for residents and visitors alike. This study examines the condition, maintenance, and proximity of roadside trees to electric wire corridors in Pokhara Metropolitan City, Nepal. This study employs field surveys, categorization based on tree attributes, and mapping techniques to analyze the distribution and characteristics of roadside trees. Out of approximately 1500 trees initially collected, 1435 were processed for further analysis. Trees were classified by species, height, condition, and the presence of fencing or resting structures (Chautaro), with proximity to electric wire corridors also assessed. Findings reveal a significant presence of trees in good condition, predominantly Dhupi, Kapur and Ashoka species, with a notable percentage requiring maintenance. A substantial number of trees were found in close proximity to electric wires, posing potential hazards. Mapping techniques facilitated visualizing the spatial distribution of trees, aiding in urban planning and management strategies. The study underscores the importance of sustainable urban greening practices and the need for proactive measures to address challenges related to tree maintenance and safety in urban environments like Pokhara Metropolitan City. This study emphasizes the pivotal role of roadside trees in enhancing the aesthetic appeal and quality of city life, positioning them as decisive factors in shaping urban environments and fostering a welcoming atmosphere for residents and visitors.

Keywords

Roadside Trees, Urban Greenery, Pokhara, GPS Survey, Chautaro

1. Introduction

Urban greenery, encompassing various elements such as parks, gardens, and street trees, constitutes an integral aspect of urban landscapes worldwide [1-2]. Among these elements, roadside trees hold a particular significance due to their strategic placement along urban streets and roads [3-4]. Urban greenery, including roadside trees, plays a pivotal role in enhancing the environmental quality, aesthetic appeal, and overall livability of cities [5-6]. This paper seeks to explore the importance of urban greenery, focusing specifically on roadside trees, within the context of Pokhara Metropolitan City, Nepal.

The presence of urban greenery, including roadside trees, contributes significantly to the creation of healthier and more sustainable urban environments [7-8]. These trees serve as natural air purifiers by absorbing pollutants such as carbon dioxide, sulfur dioxide, and particulate matter, thereby

improving air quality and mitigating the adverse effects of urban pollution [9-10]. Furthermore, roadside trees act as natural noise barriers, dampening traffic noise and creating more tranquil urban spaces conducive to human well-being [11-12]. Their cooling effect through shading and evapotranspiration helps mitigate the urban heat island effect, reducing temperatures in built-up areas and enhancing thermal comfort for residents [13-14]. Beyond their environmental benefits, roadside trees also play a crucial role in enhancing the social and economic fabric of cities [15-16]. They contribute to the creation of visually appealing urban landscapes, fostering a sense of place and identity within communities [17]. Studies have shown that access to green spaces, including streets lined with trees, correlates positively with residents' mental health and overall quality of life [18-19]. Moreover, urban greenery, including roadside

trees, has been linked to increased property values and economic vitality, attracting businesses, residents, and visitors to urban areas [20-21].

In the context of other cities globally, the types of trees planted along urban streets vary depending on factors such as climate, soil conditions, and local preferences [22-23]. Common species of roadside trees include deciduous and evergreen varieties, native and non-native species, and trees with varying growth habits and canopy sizes [24-25]. For instance, cities in temperate climates may feature a mix of broad-leaved deciduous trees such as maples, oaks, and elms, renowned for their vibrant foliage colors in autumn. In contrast, cities in subtropical or tropical climates may favor evergreen species like palms, ficus, and eucalyptus, prized for their year-round greenery and shade-providing qualities.

Regardless of the specific species planted, the presence of roadside trees in urban environments contributes to creating healthier cities. Their benefits extend beyond mere beautification to encompass crucial ecological, social, and economic functions essential for building sustainable and resilient urban communities [26]. As such, understanding the management practices and community perceptions surrounding roadside trees is paramount for fostering their long-term health and maximizing their contributions to urban ecosystems. In this context, the case study conducted in Pokhara Metropolitan City offers valuable insights into the challenges and opportunities associated with urban greenery management, with a specific focus on roadside trees.

1.1 Study Area

Pokhara city is taken as the study area of our project. Pokhara city is the headquarter of Kaski district of Nepal. Its latitude and longitude are 28° 12' 34.1964" N and 83° 57' 34.2648" E respectively. It is the country's largest Metropolitan city in terms of area and second largest in terms

of population. It is also known as the city of lakes and one of the most appropriate touristic destinations of Nepal. The average temperature of Pokhara Metropolitan is 21.5°C that makes the city mild, pleasant and climatically suitable for the tourist.

Pokhara holds significant importance as a tourism capital not only within Nepal but also on an international scale. Renowned for its breathtaking natural beauty, Pokhara is nestled amidst the majestic Annapurna and Dhaulagiri mountain ranges, with the serene Phewa Lake adding to its charm. This picturesque city serves as a gateway to popular trekking destinations such as the Annapurna Circuit and the Annapurna Base Camp, attracting trekkers and adventure enthusiasts from around the globe. Beyond its natural allure, Pokhara offers a plethora of tourist attractions and activities. Visitors can explore the vibrant Lakeside area, bustling with restaurants, cafes, and shops offering a diverse range of cuisine and handicrafts. The city is also home to cultural landmarks such as the Bindyabasini Temple, and the World Peace Pagoda, which provide insights into Nepal's rich cultural heritage. Moreover, Pokhara serves as a hub for outdoor adventures, including paragliding, zip-lining, boating, and mountain biking, making it a haven for thrill-seekers and nature lovers alike. The city's mild climate, scenic landscapes, and hospitable atmosphere contribute to its reputation as a must-visit destination in Nepal. Given Pokhara's status as a tourism capital and its significance as a gateway to the Himalayas, the management of urban greenery, including roadside trees, is crucial for enhancing the city's aesthetic appeal, environmental quality, and overall visitor experience. As such, understanding the characteristics and management practices of roadside trees within Pokhara Metropolitan City is essential for promoting sustainable tourism and preserving the city's natural beauty for future generations.

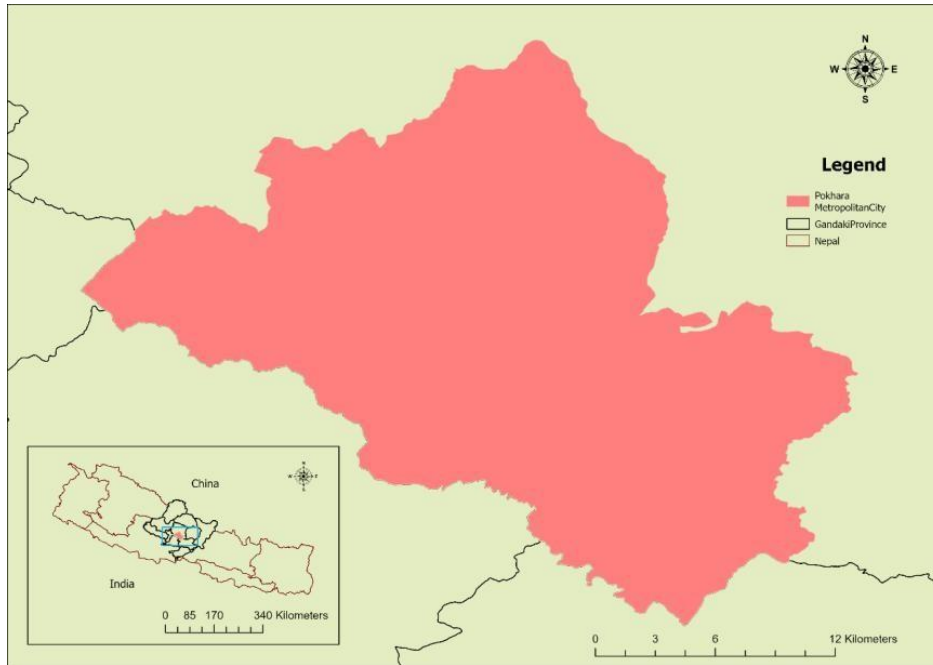


Figure 1. Study Area Map of Pokhara Metropolitan City.

The study area encompasses various road sections within Pokhara Metropolitan City, located in the Kaski District of the Gandaki Province in Nepal. Notable places within this area

include Bagar, Mahendrapool, Naya Bazar, Mustang Chowk, Rastra Bank Chowk, the Lakeside area, Hallan Chowk, Zero Kilometer, Shrijana Chowk, and Bindyabasini Chowk.

Table 1. Location information of study area.

Country	Nepal
Province	Gandaki
District	Kaski
Metropolitan	Pokhara
Road Sections	Bagar – Mahendrapool – Naya Bazar – Mustang chowk – Rastra Bank Chowk – Lake side area Hallan Chowk – zero km – Shrijana chowk – Bindyabasini chowk

2. Methodology

The methodology employed for this study involved a comprehensive approach to data collection, transfer, analysis, and map preparation to assess the attributes of roadside trees in Pokhara Metropolitan City. The data collection process began with the utilization of the kobocollect mobile

application, which facilitated the systematic recording of point data for each tree's location and other relevant attributes. These attributes included latitude, longitude, altitude, address, the name of the tree, presence of fencing, diameter measurement, tree category, estimated height, presence of chautaro (traditional resting place), proximity to electric wires, overall tree condition, and photographic documentation.

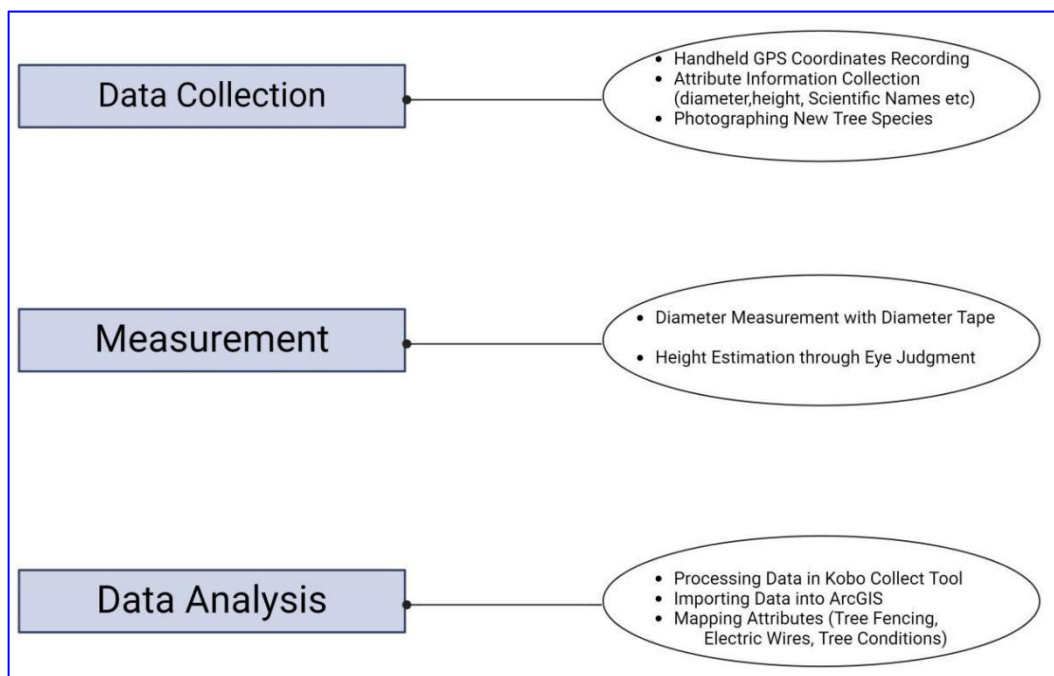


Figure 2. Overview of Methodology.

To ensure accurate measurements, handheld GPS devices were used to record the geographic coordinates (latitude and longitude) of each roadside tree. Additionally, the diameter of each tree was measured using a diameter tape, providing precise measurements for further analysis. However, due to practical constraints, tree height was estimated through visual assessment, relying on eye judgment to determine approximate heights.

The data collected through kobcollect were then transferred to the KoboToolbox server and subsequently downloaded in .csv format for further processing. This process facilitated efficient data management and analysis. The collected data, including tree species, scientific names, and attribute information, were imported into ArcGIS 10.8 in .shp format using export tools.

Once imported into ArcGIS, the data were utilized to prepare thematic maps depicting various attributes such as tree species distribution, presence of fencing, proximity to electric wires, and overall tree condition. These maps provided visual representations of the spatial distribution and characteristics of roadside trees within Pokhara Metropolitan City.

The entire survey process, including data collection, transfer, and analysis, took approximately one week to complete. This time-frame allowed for thorough data collection and analysis while ensuring the accuracy and reliability of the findings.

In summary, the methodology employed in this study encompassed a systematic approach to data collection, transfer, analysis, and map preparation, facilitating a comprehensive assessment of roadside trees in Pokhara Metropolitan City. Through the utilization of advanced tools and techniques, this study aimed to provide valuable insights into the distribution, characteristics, and management of urban greenery within the study area.

3. Result

3.1. Datasets Preparation

After processing and cleaning the collected data, a final table summarizing the attributes of roadside trees in Pokhara Metropolitan City was created. The table provides detailed information on each tree, including its geographical coordinates, altitude, address, tree species, diameter, height, presence of fencing, proximity to electric wires, overall condition, and scientific name. This comprehensive dataset allows for a detailed analysis of the distribution, characteristics, and management status of roadside trees in the study area.

Below is a sample excerpt from the final table:

Table 2. Sample of road side trees with location information and key attributes.

S.N.	Latitude	Longitude	ScientificName	Fencing	Category	Chautaro	Electricwire	Condition
1	28.24189	83.98877	<i>crapemyrtles</i>	Yes	Small	Yes	Yes	Good
2	28.23377	83.99022	<i>Nyctanthes arbor-tristis</i>	No	Medium	Yes	No	Good
4	28.23078	83.99127	<i>Cinnamomum camphora</i>	No	Medium	No	Yes	Good
5	28.24173	83.98874	<i>Schizolobium parahyba</i>	No	Medium	No	No	Good
6	28.23073	83.99127	<i>Schizolobium parahyba</i>	No	Medium	Yes	Yes	Good
7	28.23061	83.99131	<i>Cinnamomum camphora</i>	No	Medium	Yes	Yes	Good
8	28.24099	83.98879	<i>Schizolobium parahyba</i>	Yes	Medium	Yes	Yes	Good
9	28.23078	83.99128	<i>Cinnamomum camphora</i>	Yes	Small	No	No	Good
10	28.23075	83.99119	<i>Cinnamomum camphora</i>	No	Medium	No	Yes	Good

This final table serves as a valuable resource for understanding the spatial distribution, species composition, and management status of roadside trees in Pokhara Metropolitan City.

3.2 Key Attribute Visualization

Bar diagrams and charts were generated to provide graphical representations of specific attributes and trends related to roadside trees. These visual aids included diagrams depicting the height categories, tree species composition, fencing coverage, and the prevalence of trees near electric

wires.

Scientific Name

With the assistance of friends from forestry college and utilizing the internet, the scientific names of each species were identified, along with their local names and photos.

The bar diagram in Figure 3 indicates that there are approximately 288 *Juniperus indica*, followed by 253 *Cinnamomum camphora*, and 226 *Saraca asoca*. Additionally, 316 trees were recorded as "others," consisting of *Areca catechu* (39), *Ficus religiosa* (35), *Cinnamomum tamala* (32), among others.

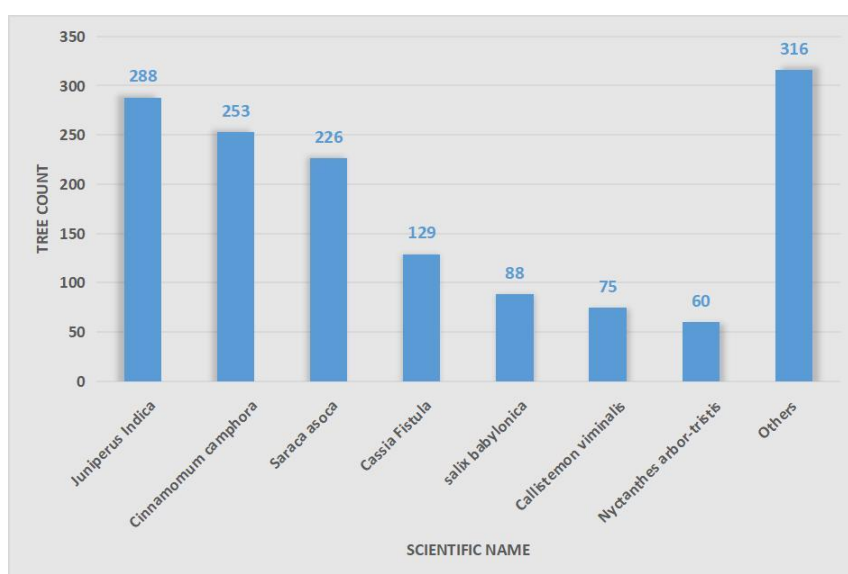


Figure 3. Bar Diagram showing number of trees Vs scientific name.

Height Categories:

In order to gain insights into the height and its impact on the surrounding environment, we categorized the height into three groups: small, medium, and large. Trees with a height below 3 meters are classified as small. Trees with a height above 3 meters and below 10 meters are categorized as medium, while trees above 10 meters are classified as large.

The pie chart in Figure 4 illustrates that around 635 trees fall into the small category, with the majority being pine trees. Additionally, 652 trees fall into the medium category, with the highest number being ashoka trees. Finally, 142

trees, including sacred trees like pipal and bar, are categorized as large.

Table 3. Local name of Road Side Trees on left and Scientific name on right

Local Name	Scientific Name
Dhupi	<i>Juniperus Indica</i>
Kapur	<i>Cinnamomum camphora</i>
Ashoka	<i>Saraca asoca</i>
Baar	<i>Ficus benghalensis</i>
Pipal	<i>Ficus religiosa</i>

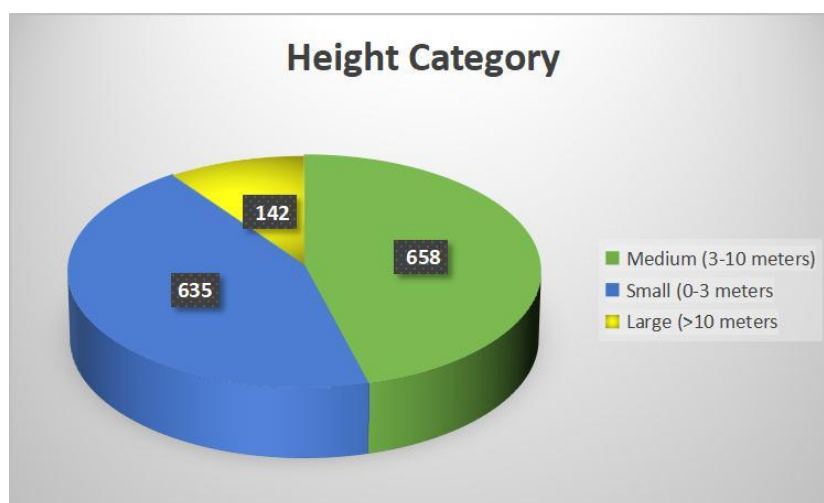


Figure 4. 3D: Pie Chart showing the number of trees Vs height categorized in small, medium and large.

Presence of Fencing

In our study, we defined a fence as a structure enclosed by a round metal bar or wooden structure.

Out of 1435 trees surveyed, approximately 58% were provided with fencing, with the majority enclosed by a round metal structure, as depicted in Figure 5. It was observed that the fencing and plantation activities were predominantly

carried out by youth clubs and NGOs located in Pokhara on significant occasions. On the other hand, around 42% of the trees were not provided with fencing. Most of these unfenced trees are 8 meters or taller in height and are widely spread. Several of these trees are already in contact with electric wires, posing a potential hazard.

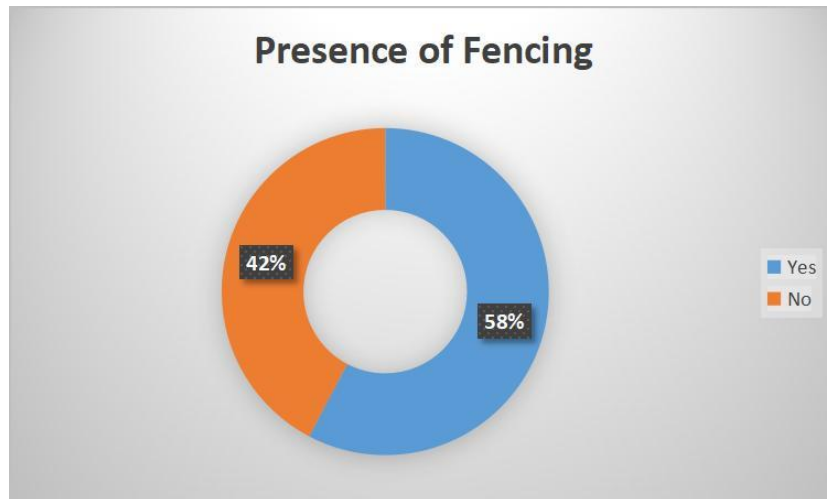


Figure 5. Doughnut-chart showing Number of Trees VS Presence of Fencing.

Overall Condition

In our study, we also categorized trees according to their appearance, distinguishing between trees in good condition, those requiring further maintenance, those that have been chopped down, and dead trees. Four categories were created based on tree condition.

The pie chart in Figure 6 illustrates that out of 1435 trees surveyed:

- 1229 trees were in good condition, indicating that they were well-shaped, well-watered, and had a healthy green appearance.
- Approximately 9% (136 trees) required further maintenance, suggesting the need for trimming and additional watering.
- 56 trees were chopped down, evidenced by long stems with few green leaves and clear visible chop marks.
- 14 out of 1435 trees were dead and must be replaced by new plants.

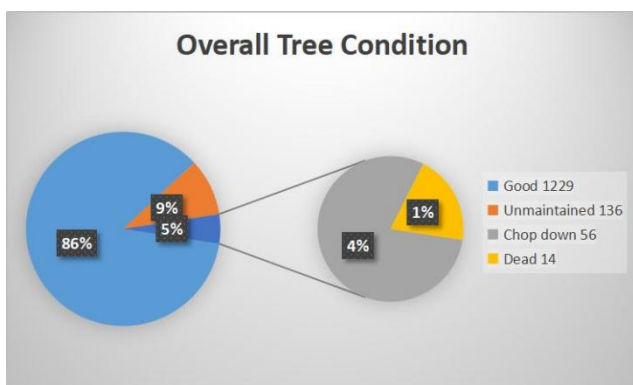


Figure 6. Pie chart showing overall condition of trees and their appearance. Exploring Urban Greenery: A Case Study of Roadside Trees in Pokhara Metropolitan City (2024) Aashish Gautam (Nepal)

Presence of Chautaro

"Chautaro" typically refers to a raised platform or pedestal often found in traditional Nepali architecture. It's commonly used as a place for resting, socializing, or conducting community activities. Chautaro are usually made of stone or concrete and may have trees planted around them.

The pie chart in Figure 7 indicates that around 3% of the 1435 trees surveyed, totaling 48 trees, have structures such as concrete, metal, or wooden seating areas where people can sit and relax for some time. These resting places, known as "Chautaro," are scattered throughout all areas of Pokhara.

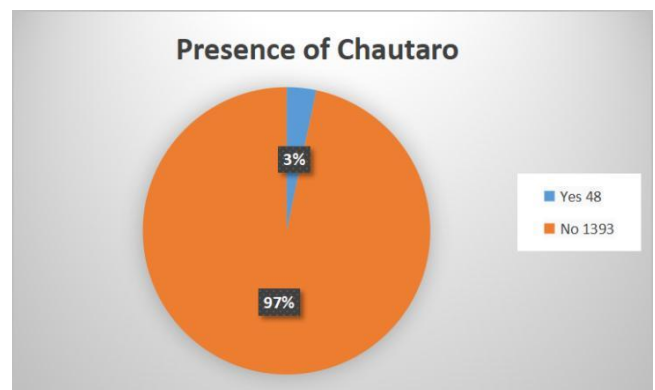


Figure 7. Pie-chart showing Number of Trees Vs Presence of chautaro's.

Proximity to Electric Wires

In most cities in Nepal, roadside trees are often planted directly below the electric wire corridor. While trees like pine may not pose a hindrance to the electric wire corridor, trees like ashoka and eucalyptus, which may grow in height and eventually come into contact with the electric wires. In our survey conducted in the roads of Pokhara, we observed a

large number of trees in close proximity to the electric wires, with some already touching them, and a few growing taller than the electric wires.

The pie chart in [Figure 8](#) illustrates that out of the 1435 trees counted:

- 18% (256 trees) were found to be touching electric wires.
- Although 1179 trees were not touching electric wires, nearly forty percent of them were in close proximity to the electric wires and may come into contact with them within a year or so.

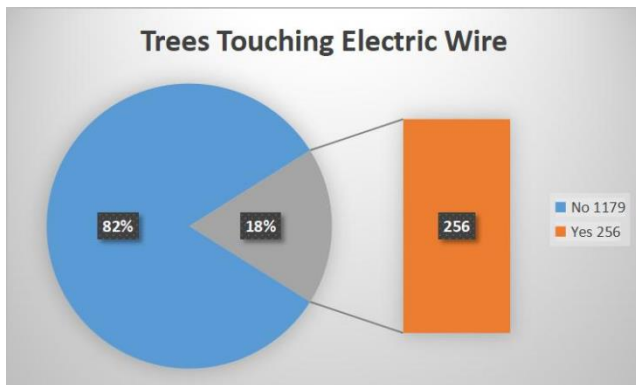


Figure 8. Bar of Pie-chart showing Number of Trees touching electric wire.

Map Preparation

Following the creation of the final table summarizing the attributes of roadside trees in Pokhara Metropolitan City and key attribute visualization in bar diagrams and charts, the datasets was utilized to generate thematic maps. Thematic maps were constructed using ArcGIS software at a scale of 1:1000 to illustrate the spatial distribution of various attributes, including tree species distribution, presence of fencing, proximity to electric wires, and overall tree condition.

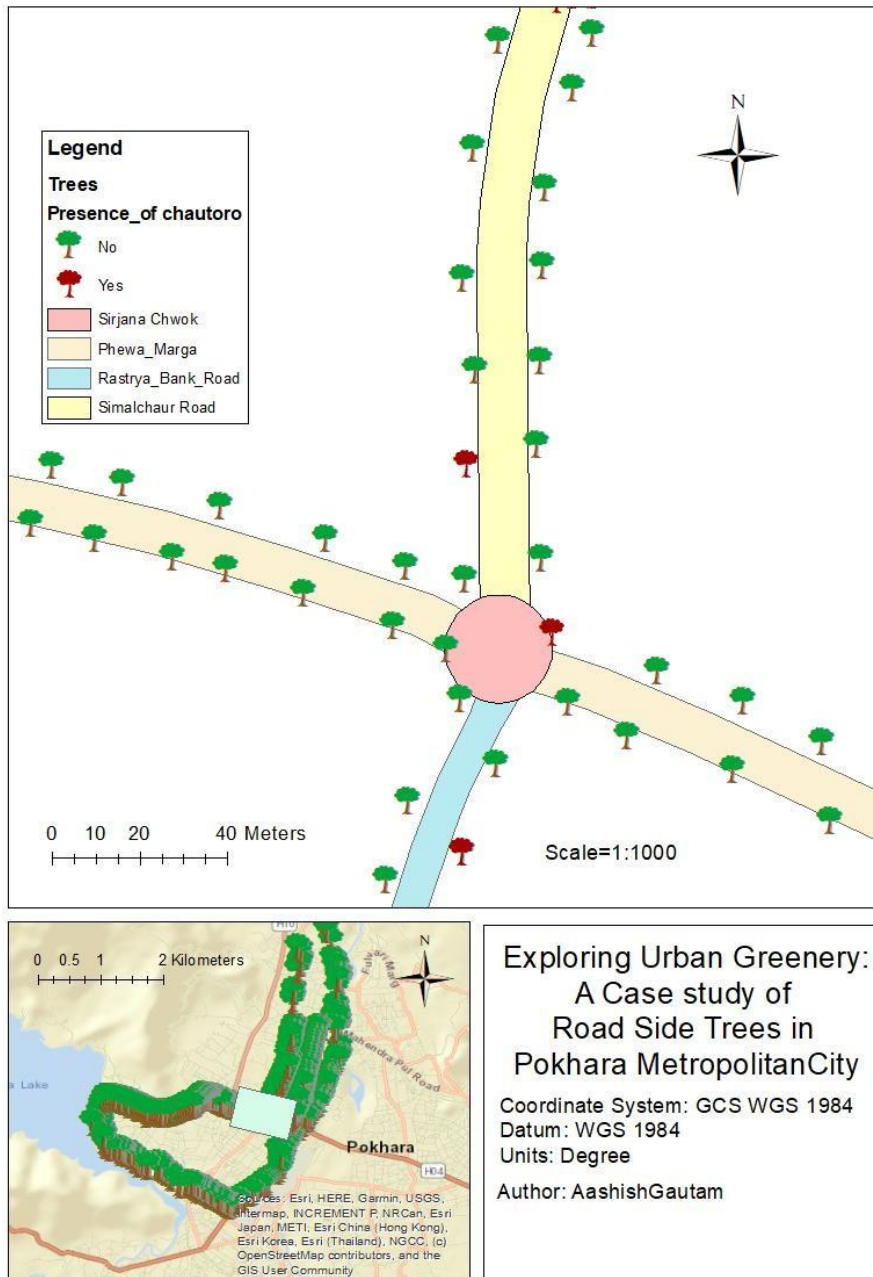
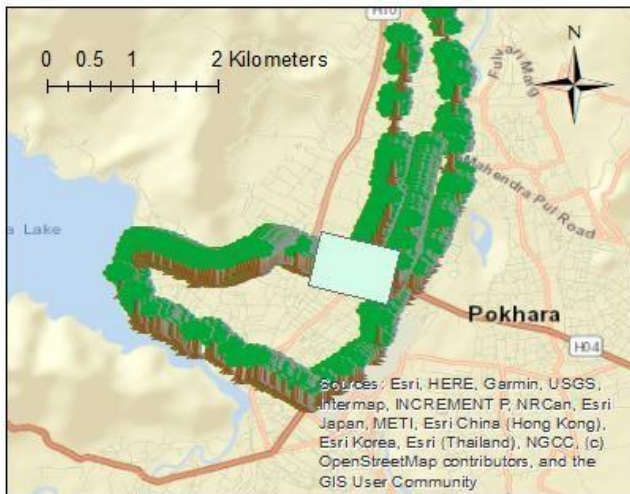
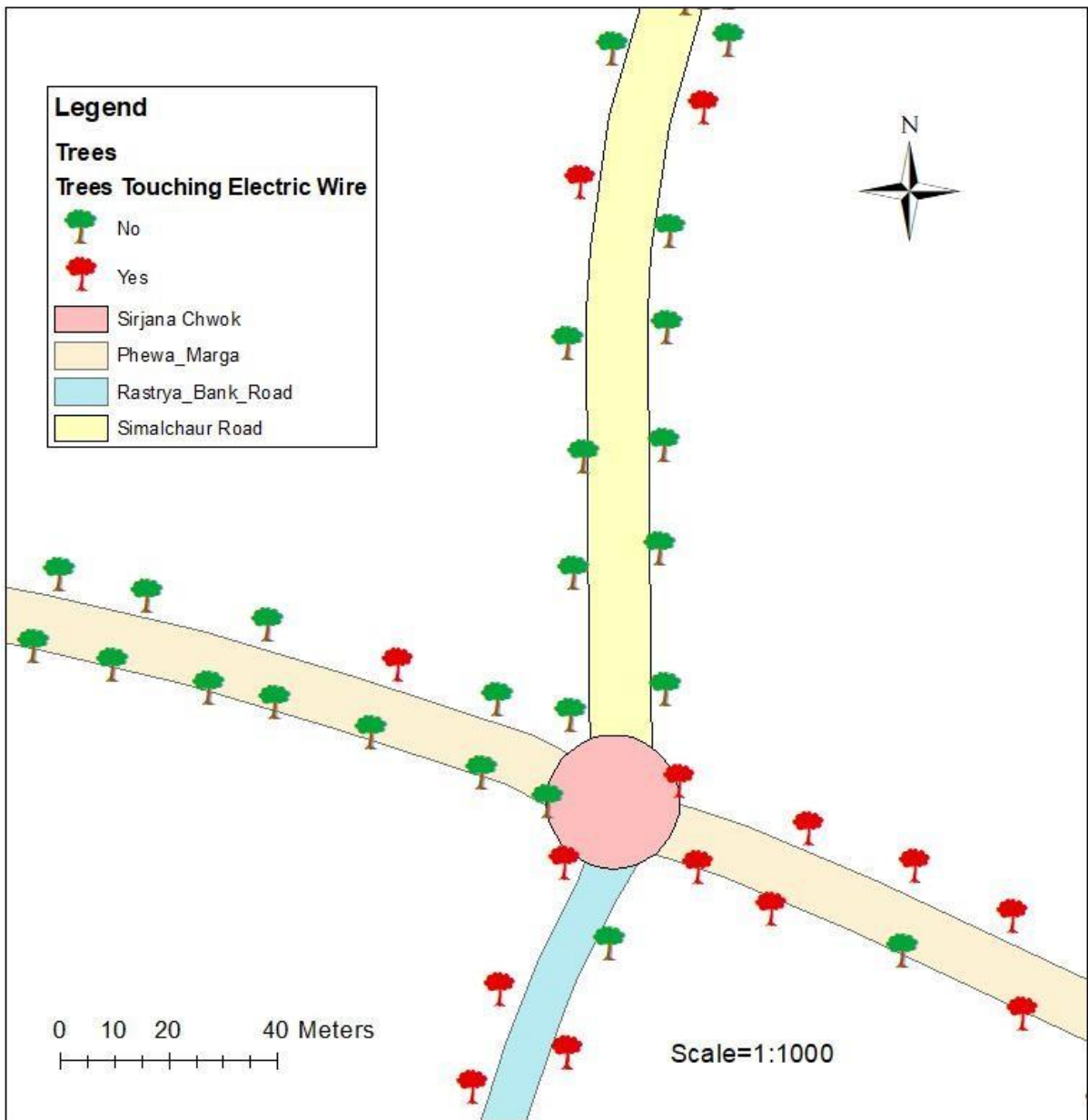


Figure 9. Map of Roadside Trees in Pokhara Metropolitan City, with trees having chautoro represented by light brown color.

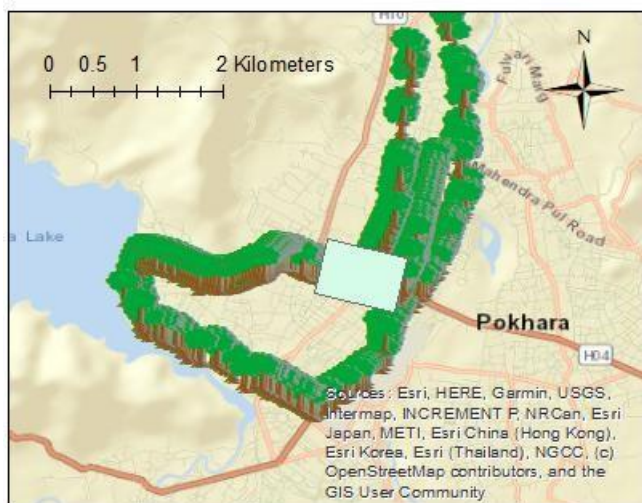
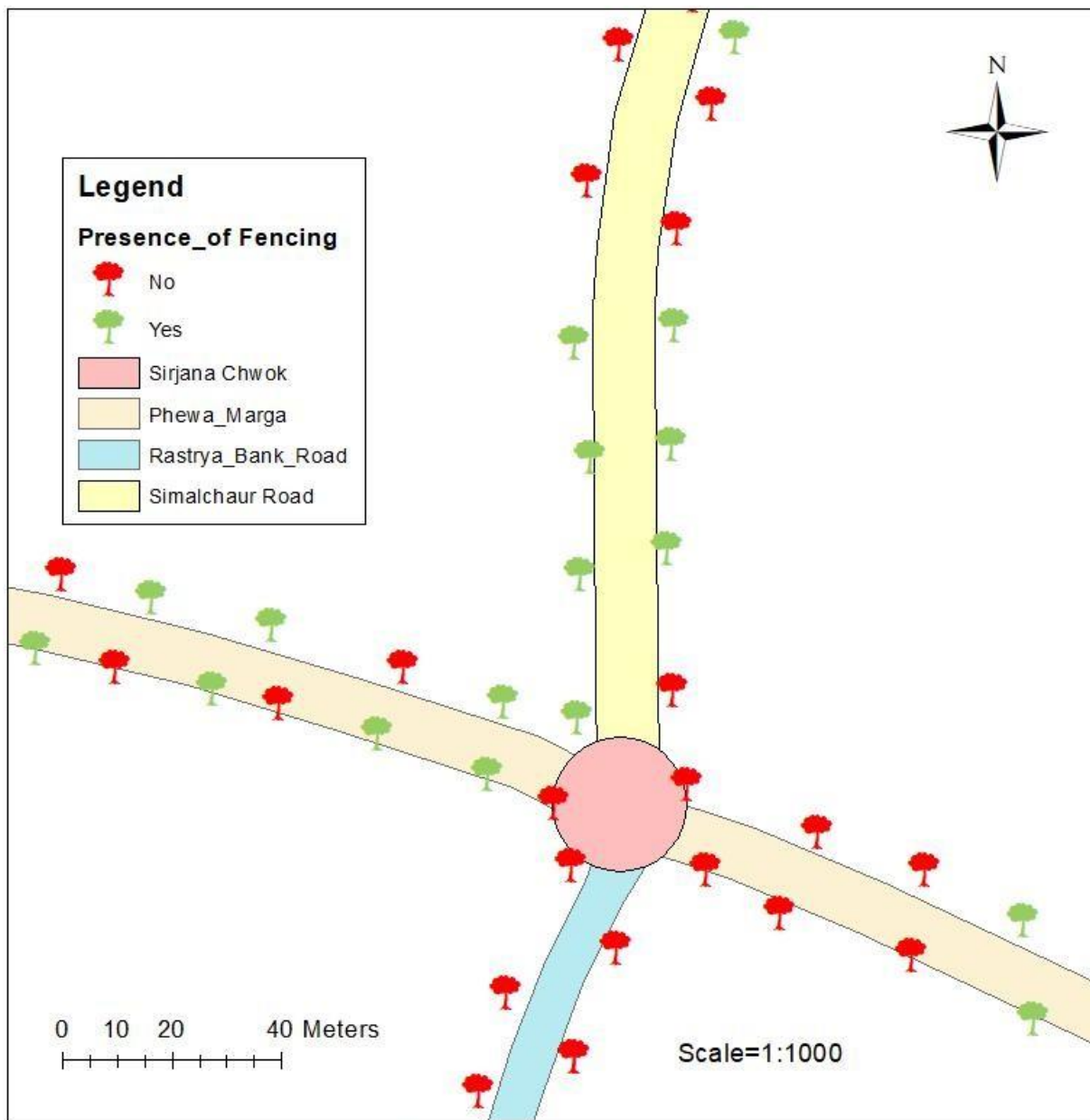


**Exploring Urban Greenery:
A Case study of
Road Side Trees in
Pokhara Metropolitan City**

Coordinate System: GCS WGS 1984
Datum: WGS 1984
Units: Degree
Author: AashishGautam

Figure 10. Map of Roadside Trees in Pokhara Metropolitan City, with trees touching electric wires represented by red color.

Exploring Urban Greenery: A Case Study of Roadside Trees in Pokhara Metropolitan City (12954)
Aashish Gautam (Nepal)



**Exploring Urban Greenery:
A Case study of
Road Side Trees in
Pokhara Metropolitan City**

Coordinate System: GCS WGS 1984
Datum: WGS 1984
Units: Degree
Author: AashishGautam

Figure 11. Map of Roadside Trees in Pokhara Metropolitan City, with trees having fencing represented by red color.

Exploring Urban Greenery: A Case Study of Roadside Trees in Pokhara Metropolitan City (12954)
Aashish Gautam (Nepal)

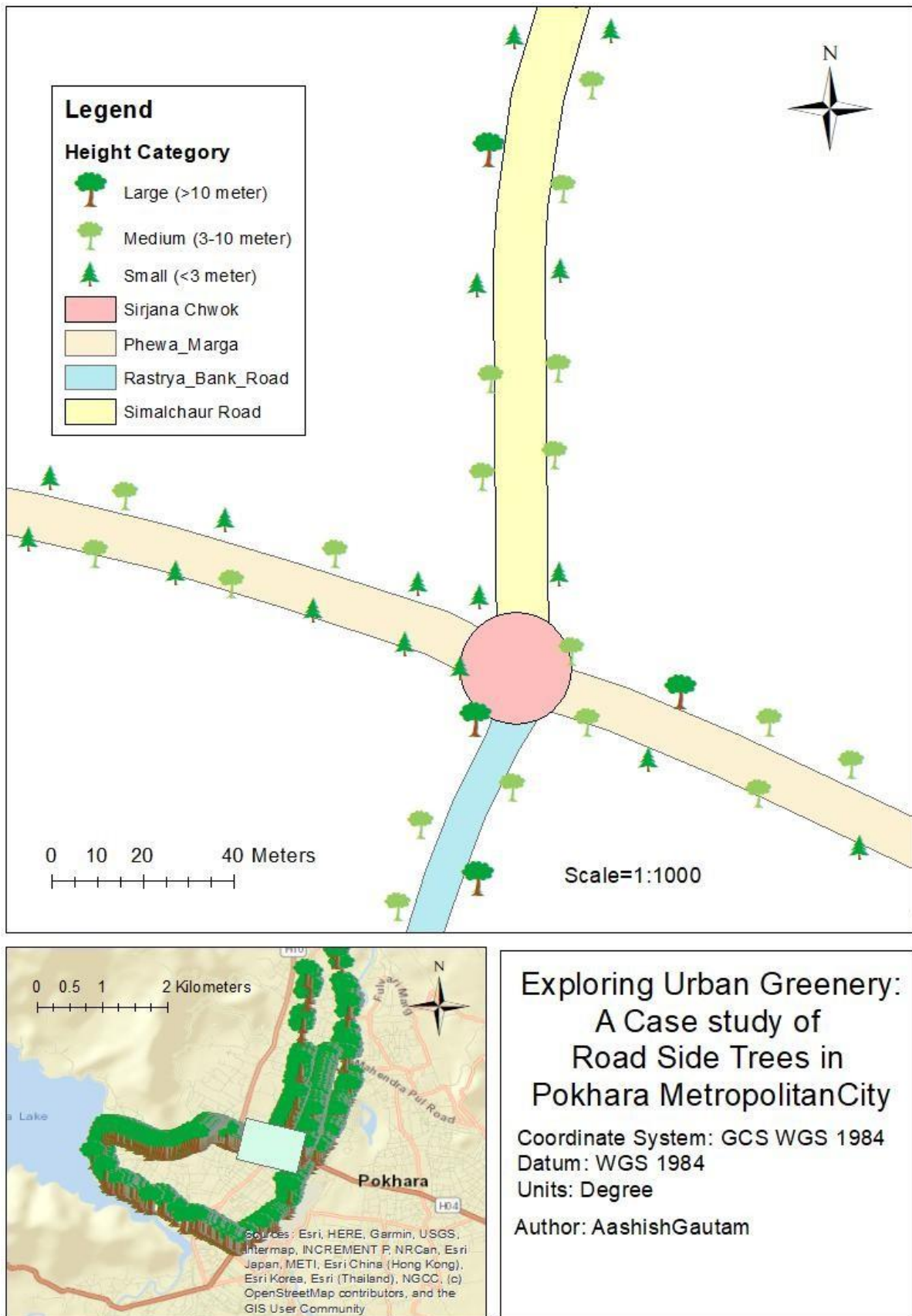
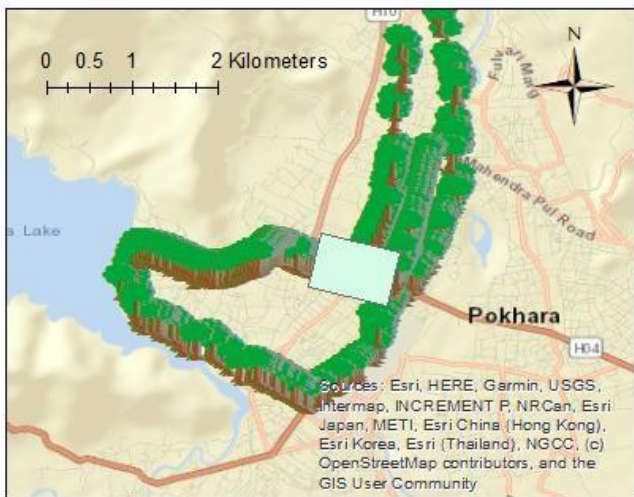
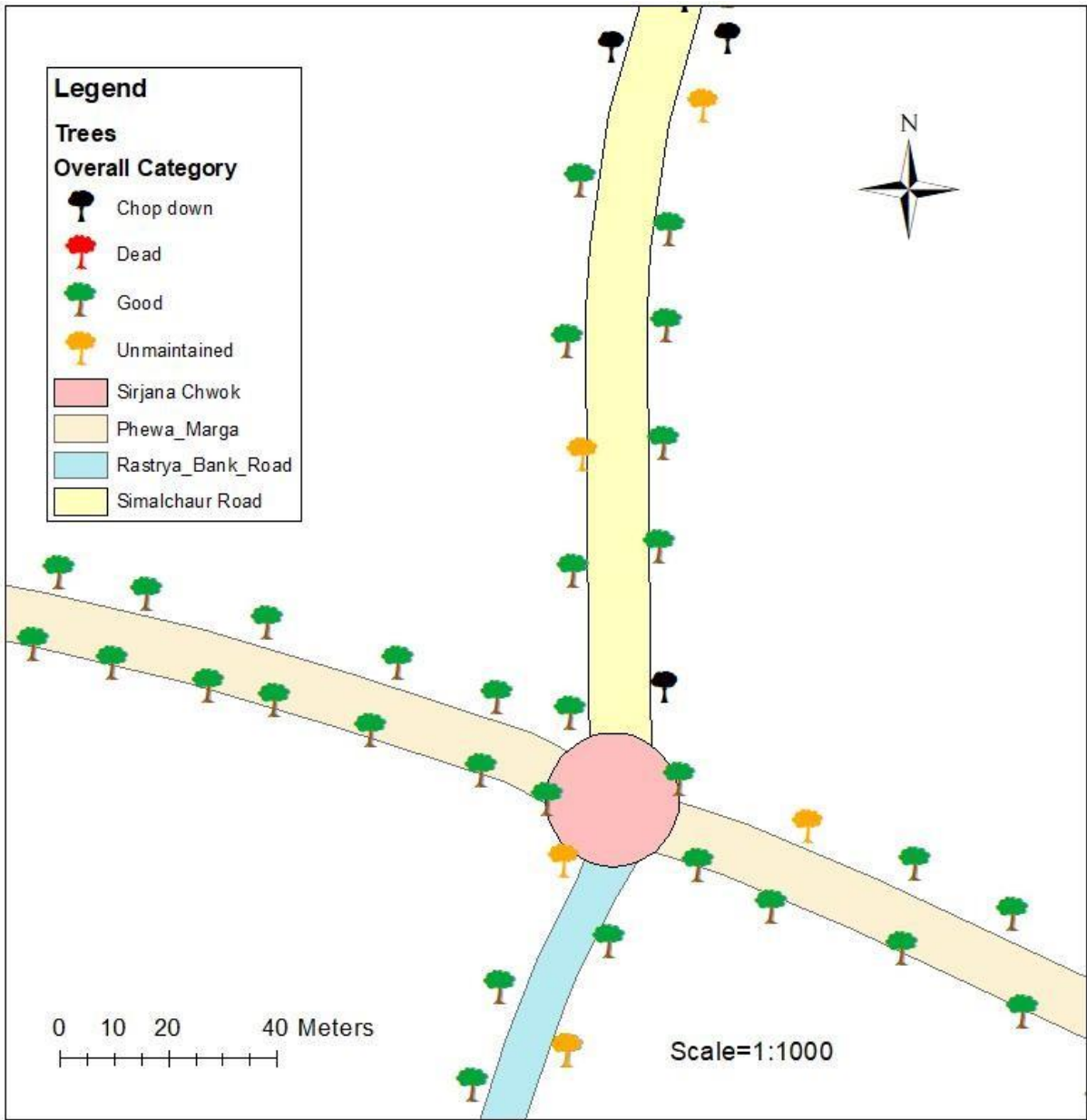


Figure 12. Map of Roadside Trees in Pokhara Metropolitan City, with trees divided into category of large, medium and small for height of trees >10 meter, 3-10 meter and <3 meter respectively.

Exploring Urban Greenery: A Case Study of Roadside Trees in Pokhara Metropolitan City (12954)
Aashish Gautam (Nepal)

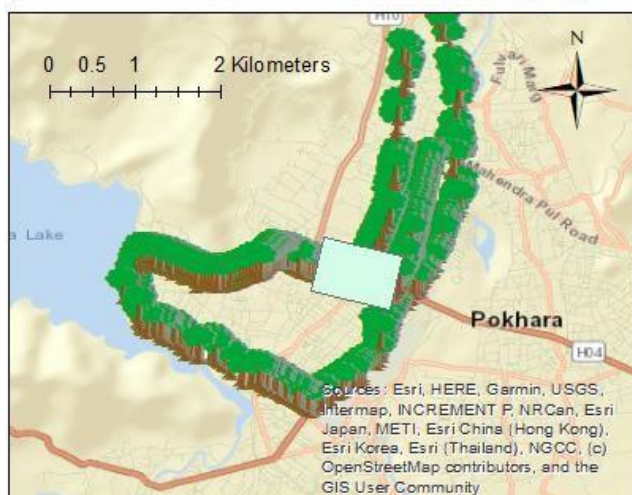
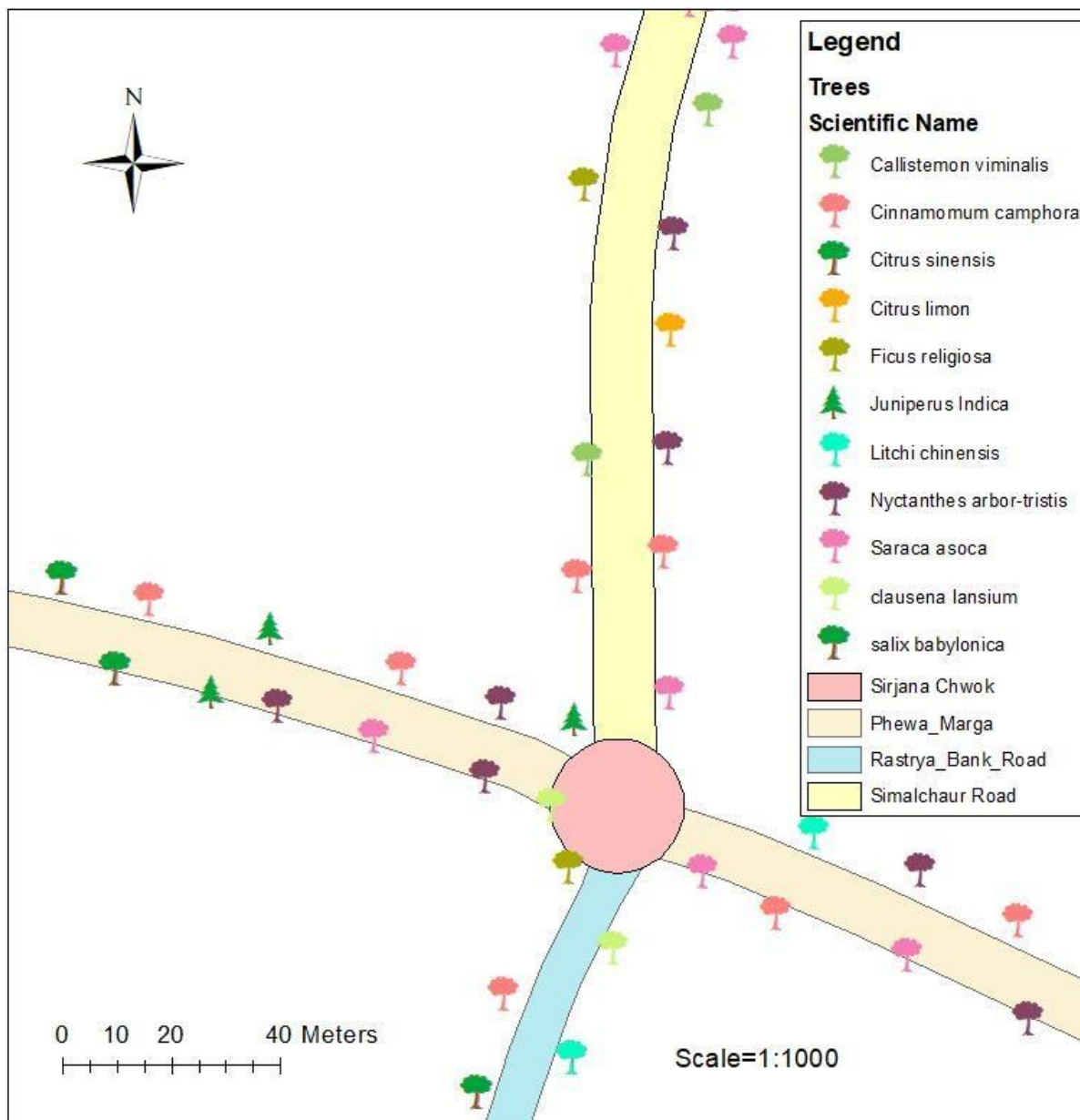


**Exploring Urban Greenery:
A Case study of
Road Side Trees in
Pokhara Metropolitan City**

Coordinate System: GCS WGS 1984
Datum: WGS 1984
Units: Degree
Author: AashishGautam

Figure 13. Map of Roadside Trees in Pokhara Metropolitan City, with trees divided into Good, Unmaintained, Dead and Chopdown.

Exploring Urban Greenery: A Case Study of Roadside Trees in Pokhara Metropolitan City (12954)
Aashish Gautam (Nepal)



**Exploring Urban Greenery:
A Case study of
Road Side Trees in
Pokhara Metropolitan City**

Coordinate System: GCS WGS 1984
Datum: WGS 1984
Units: Degree
Author: AashishGautam

Figure 14. Map of Roadside Trees in Pokhara Metropolitan City, divided according to their scientific name.

Overall, the combination of the final table, thematic maps, bar diagrams, charts, and statistical analyses provided a comprehensive overview of the attributes and management status of roadside trees in Pokhara Metropolitan City. These results contribute valuable insights into the urban greenery landscape, aiding in the development of informed management strategies for maintaining and enhancing the city's roadside tree ecosystem.

4. Conclusion

The assessment of roadside trees in Pokhara Metropolitan City has provided valuable insights into their distribution, characteristics, and management status. Through the systematic collection of data and analysis of attributes such as tree species, diameter, height, fencing, and proximity to electric wires, several key findings have emerged.

Firstly, the study revealed a diverse range of tree species present along urban streets and roads, contributing to the aesthetic appeal and environmental quality of the city. However, challenges such as inadequate fencing and trees touching electric wires were observed, posing safety concerns and inconvenience to local residents.

Secondly, the assessment highlighted the importance of effective management strategies for roadside trees to ensure their health, safety, and contribution to urban ecosystems. Sustainable management practices, including regular maintenance, proper fencing, and addressing safety hazards such as trees touching electric wires, are essential for preserving the urban greenery landscape and enhancing the livability of Pokhara Metropolitan City.

5. Recommendations

Based on the findings of the study, the following recommendations are proposed:

Regular Maintenance: Implement regular maintenance programs to ensure the health and vitality of roadside trees. This includes pruning, watering, and pest control measures to mitigate disease and promote healthy growth.

Proper Fencing: Install and maintain adequate fencing around roadside trees to protect them from damage caused by vehicles, pedestrians, or animals. Proper fencing also enhances the safety of pedestrians and nearby structures.

Addressing Safety Hazards: Take immediate measures to address safety hazards such as trees touching electric wires. Collaborate with local utility providers to relocate or trim trees to mitigate safety risks and alleviate concerns of nearby residents.

Community Engagement: Engage with local communities, including residents and business owners, to raise awareness about the importance of roadside trees and solicit their input in tree management initiatives. Address concerns and seek

collaborative solutions to enhance the urban greenery landscape while addressing safety and aesthetic issues.

Continued Monitoring and Evaluation: Establish a monitoring and evaluation framework to assess the effectiveness of management strategies implemented for roadside trees. Regular monitoring of tree health, growth, and safety will inform adaptive management practices and ensure the long-term sustainability of urban greenery in Pokhara Metropolitan City.

It is noteworthy that during the data collection process, locals residing in areas with shops and houses nearby expressed concerns about roadside trees touching electric wires. Their feedback underscores the importance of addressing safety hazards and community concerns in the management of roadside trees, emphasizing the need for collaborative efforts between local authorities, utility providers, and residents to ensure the well-being of both trees and the surrounding community.

Abbreviations

CSV:Comma Separated Values
GCS:Geographic Coordinate System
GPS:Global Positioning System
WGS:World Geodetic System

Author Contributions

Aashish Gautam is the sole author. The author read and approved the final manuscript.

Conflicts of Interest

The author declares no conflict of interests.

Acknowledgement

I extend my heartfelt gratitude to my friends, Manoj Sapkota, Prabin Das, Hari Pathak, Roshan Kafle, and Santosh Poudel, for their unwavering support and assistance during the data collection process. Their dedication and encouragement were invaluable in completing this research. I am truly grateful for their friendship and contributions.

References

- [1] Smith, P., Davies, M., & Guy, J. (2016). The importance of urban greenery. *Urban Ecology*, 12(2), 65-78.
- [2] Zhou, H., Zhang, J., & Liu, S. (2019). Role of urban greenery in sustainable cities. *Journal of Sustainable Development*, 12(3), 45-58.
- [3] Nowak, D. J., & Dwyer, J. F. (2013). Understanding the importance of urban greenery: A Case Study of Roadside Trees in Pokhara Metropolitan City (12954)

- benefits and costs of urban forest ecosystems. In *Urban and Community Forestry in the Northeast* (pp. 17-40). Springer, Dordrecht.
- [4] Gómez-Baggethun, E., Barton, D. N., & Classen, A. T. (2013). The contribution of ecosystems to people's quality of life and well-being: A theoretical framework with empirical illustrations from Europe. *Biodiversity and Conservation*, 22.
- [5] Escobedo, F. J., Kroeger, T., & Wagner, J. E. (2011). Urban forests and pollution mitigation: Analyzing ecosystem services and disservices. *Environmental Pollution*, 159(8-9), 2078-2087. DOI: 10.1016/j.envpol.2010.12.008
- [6] Bratman, G. N., Anderson, C. B., Berman, M. G., Cochran, B., De Vries, S., Flanders, J., ... & Litschka, T. (2019). Nature and mental health: An ecosystem service perspective. *Science Advances*, 5(7), eaax0903. DOI: 10.1126/sciadv.aax0903
- [7] Davdand, P., Nieuwenhuijsen, M. J., Esnaola, M., Forns, J., Basagaña, X., Alvarez-Pedrerol, M., ... & Sunyer, J. (2016). Green spaces and cognitive development in primary schoolchildren. *Proceedings of the National Academy of Sciences*, 112(26), 7937-7942. DOI: 10.1073/pnas.1510344112
- [8] Donovan, G. H., Michael, Y. L., Butry, D. T., Sullivan, A. D., Chase, J. M., & Urban, D. L. (2011). The relationship between trees and human health: Evidence from the spread of the emerald ash borer. *American Journal of Preventive Medicine*, 40(6), 706-718. DOI: 10.1016/j.amepre.2011.01.010
- [9] Nowak, D. J., Hirabayashi, S., Bodine, A., & Greenfield, E. (2013). Tree and forest effects on air quality and human health in the United States. *Environmental Pollution*, 193, 119-129.
- [10] Escobedo, F. J., & Nowak, D. J. (2010). Benefits of urban forests: A research agenda. *Cities and the Environment (CATE)*, 3(1), 8.
- [11] Kang, J., Wang, H., Zhang, Y., Chen, Y., & Zhao, S. (2017). Evaluation on noise reduction performance of greening vegetation in urban residential areas. *Ecological Engineering*, 105, 178-185.
- [12] Dzhambov, A. M., Lercher, P., Browning, M. H., & Stoyanov, D. (2018). Does greenery experienced indoors and outdoors provide an escape and support mental health during the COVID-19 quarantine? *Environmental Research*, 201, 111355.
- [13] Akbari, H., Pomerantz, M., & Taha, H. (2001). Cool surfaces and shade trees to reduce energy use and improve air quality in urban areas. *Solar Energy*, 70(3), 295-310.
- [14] Santamouris, M. (2015). Using cool pavements as a mitigation strategy to fight urban heat island—A review of the actual developments. *Renewable and Sustainable Energy Reviews*, 41, 397-410.
- [15] Wolch, J. R., Byrne, J., & Newell, J. P. (2014). Urban green space, public health, and environmental justice: The challenge of making cities 'just green enough'. *Landscape and Urban Planning*, 125, 234-244.
- [16] Troy, A. R., Grove, J. M., & O'Neil-Dunne, J. (2012). The relationship between tree canopy and crime rates across an urban-rural gradient in the greater Baltimore region. *Landscape and Urban Planning*, 106(3), 262-270.
- [17] Kuo, F. E., & Sullivan, W. C. (2001). Environment and crime in the inner city: Does vegetation reduce crime? *Environment and Behavior*, 33(3), 343-367.
- [18] Gascon, M., Triguero-Mas, M., Martínez, D., Davdand, P., Forns, J., Plasència, A., ... & Nieuwenhuijsen, M. J. (2015). Mental health benefits of long-term exposure to residential green and blue spaces: A systematic review. *International Journal of Environmental Research and Public Health*, 12(4), 4354-4379.
- [19] Roe, J. J., Thompson, C. W., Aspinall, P. A., Brewer, M. J., Duff, E. I., & Miller, D. (2013). Green space and stress: Evidence from cortisol measures in deprived urban communities. *International Journal of Environmental Research and Public Health*, 10(9), 4086-4103.
- [20] Wolf, K. L. (2005). Trees in the small city retail business district: Comparing resident and visitor perceptions and spending patterns. *Journal of Forestry*, 103(8), 380-386.
- [21] Donovan, G. H., & Butry, D. T. (2010). Trees in the city: Valuing street trees in Portland, Oregon. *Landscape and Urban Planning*, 94(2), 77-83.
- [22] McPherson, E. G., Xiao, Q., Aguaron, E., & van Doorn, N. S. (2013). A new approach to quantify and map carbon stored, sequestered and emissions avoided by urban forests. *Landscape and Urban Planning*, 120, 70-84.
- [23] Hauer, R. J., Hoehn, R., & Marshall, J. D. (2016). A model to predict municipal tree canopy cover change: Implications for monitoring and planning. *Urban Forestry & Urban Greening*, 19, 85-94.
- [24] Nowak, D. J., & Hoehn, R. E. (2018). Urban forests and climate change mitigation: A systematic review. *Urban Forestry & Urban Greening*, 35, 77-86.
- [25] Jim, C. Y. (2019). Urban forests in cities of the global south. *Geography Compass*, 13(11), e12475.
- [26] Lin, B. B., Fuller, R. A., Bush, R., Gaston, K. J., & Shanahan, D. F. (2019). Opportunity or orientation? Who uses urban parks and why. *PLoS ONE*, 14(3), e0214131.

Contacts

Geo3DModelling Pvt. Ltd. |

Institute of Engineering,

Pashchimlal Campus, Pokhara | Case Study of Roadside Trees in Pokhara Metropolitan City (12954)

Aashish Gautam (Nepal)
aashishgautam533@gmail.com