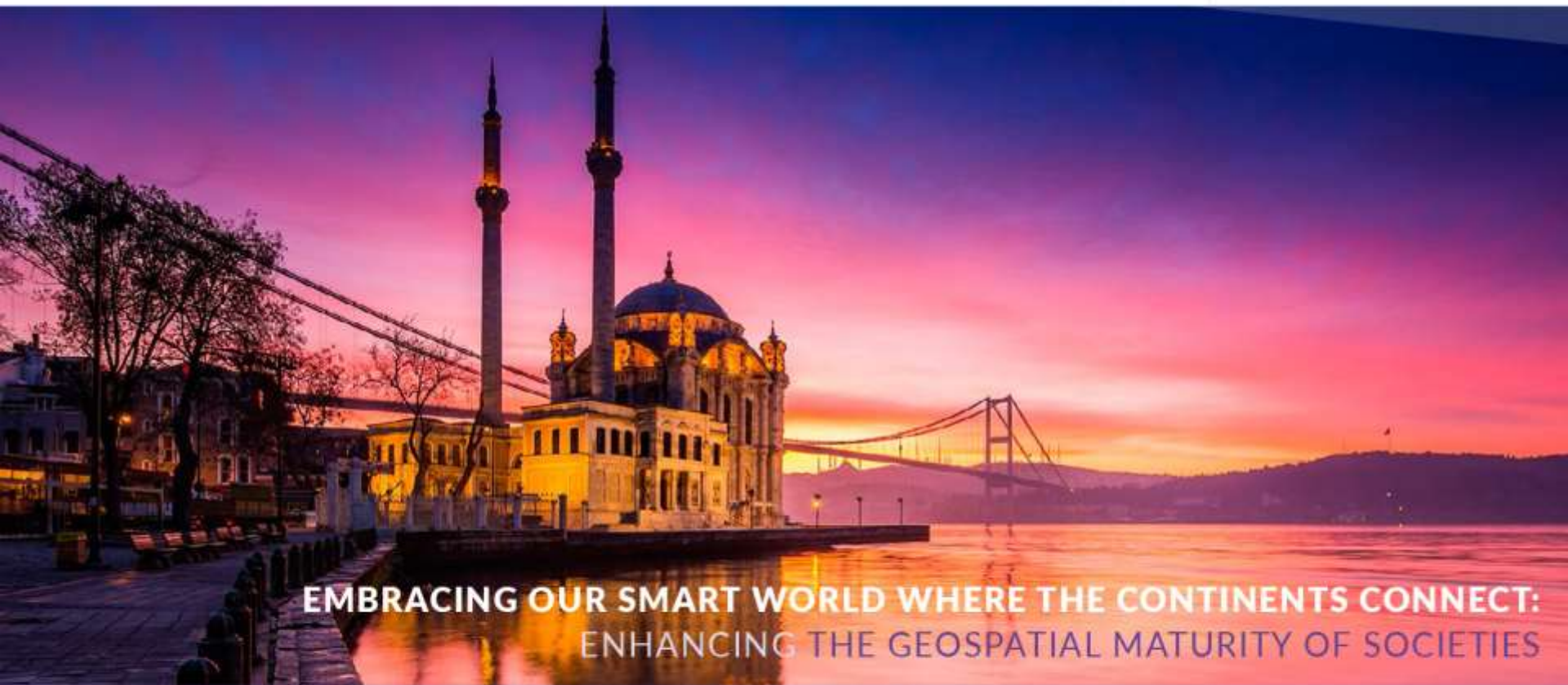




XXVI FIG Congress 2018

6-11 May 2018

ISTANBUL



**EMBRACING OUR SMART WORLD WHERE THE CONTINENTS CONNECT:
ENHANCING THE GEOSPATIAL MATURITY OF SOCIETIES**

ORGANISED BY



MAIN SUPPORTERS



PLATINUM SPONSORS





XXVI FIG Congress 2018

6-11 May 2018 ISTANBUL

EMBRACING OUR SMART WORLD WHERE THE CONTINENTS CONNECT:

ENHANCING THE GEOSPATIAL MATURITY OF SOCIETIES

Commission 8 – Spatial planning and development



Marije Louwsma – GIN, Netherlands

Working for Cadastre, Land Registry and Mapping Agency –
department spatial planning

ORGANISED BY



MAIN SUPPORTERS



PLATINUM SPONSORS



FIG
2018
ISTANBUL

XXVI FIG Congress 2018

6-11 May 2018 ISTANBUL

EMBRACING OUR SMART WORLD WHERE THE CONTINENTS CONNECT:

ENHANCING THE GEOSPATIAL MATURITY OF SOCIETIES



2000 2002 2004 2006 2008 2010 2012 2014 2016 2018 2019

Today

GIMA 1 Sep - 10 May

Cadastre, Land Registry and Mapping Agency 1 Feb - 6 May

MSc Environmental planning 1 Sep - 1 Nov

Wageningen University 2 Nov - 15 Dec

Municipality 16 Dec - 1 Feb

ORGANISED BY



MAIN SUPPORTERS



PLATINUM SPONSORS





XXVI FIG Congress 2018

6-11 May 2018 ISTANBUL

EMBRACING OUR SMART WORLD WHERE THE CONTINENTS CONNECT:

ENHANCING THE GEOSPATIAL MATURITY OF SOCIETIES



Symposium on Land Consolidation and Land Readjustment for Sustainable Development

9 to 11 November 2016 | Apeldoorn | The Netherlands



Food and Agriculture
Organization of the
United Nations

Supported by



ORGANISED BY



MAIN SUPPORTERS



PLATINUM SPONSORS





XXVI FIG Congress 2018

6-11 May 2018 ISTANBUL

EMBRACING OUR SMART WORLD WHERE THE CONTINENTS CONNECT:

ENHANCING THE GEOSPATIAL MATURITY OF SOCIETIES

Ideas for commission 8 - themes

- Relation land administration – land policy – land governance in spatial planning/development
- Participation: Voice of landowners / land users in planning processes
- Sustainable development at various scales: local – regional – national – global
- Interdependency rural – urban development
- Planning systems, traditions and tools
- Transition from fossil-based economy towards renewable energy-based economy
-
- ... Further develop ideas in working groups

ORGANISED BY



MAIN SUPPORTERS



PLATINUM SPONSORS





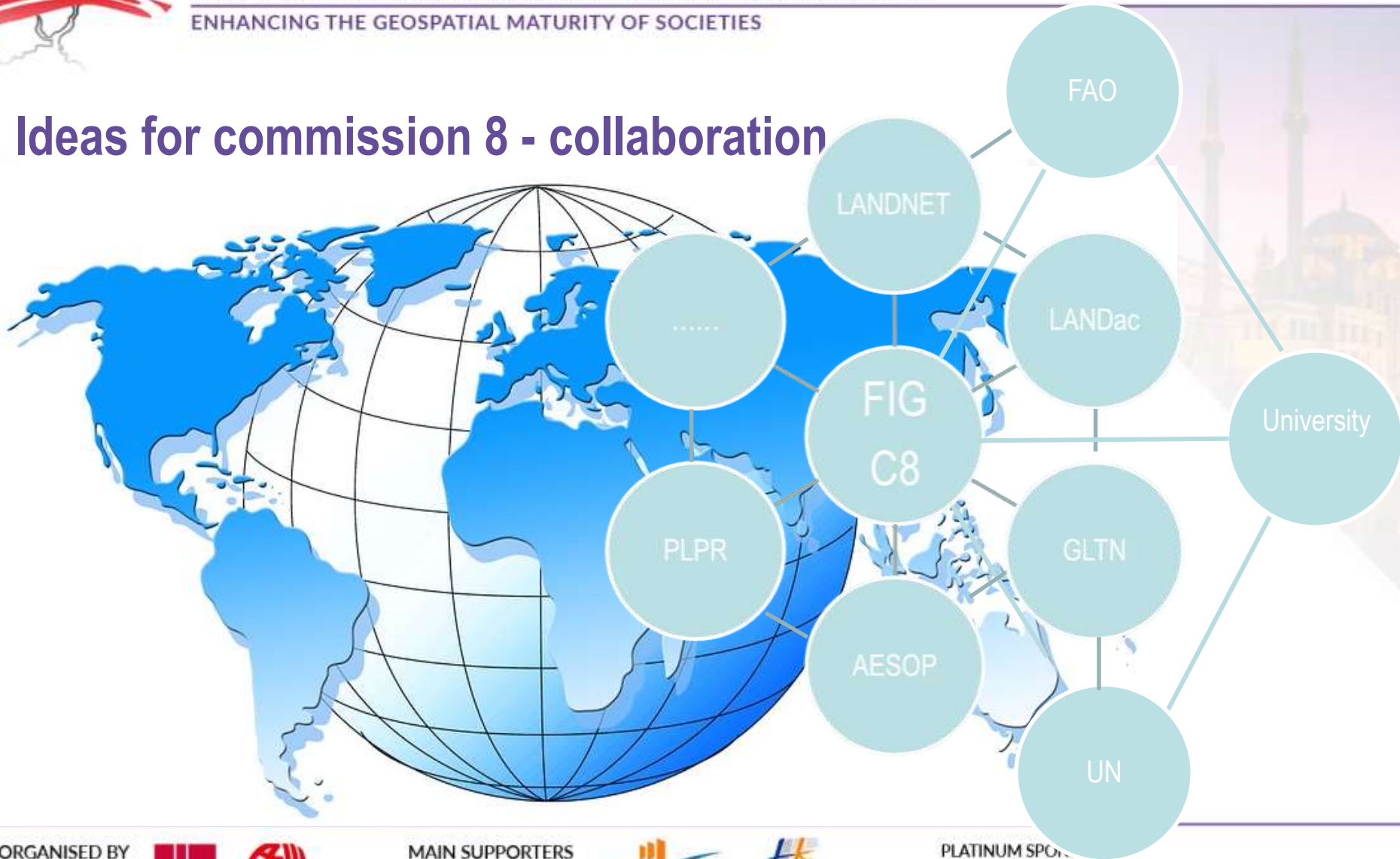
XXVI FIG Congress 2018

6-11 May 2018 ISTANBUL

EMBRACING OUR SMART WORLD WHERE THE CONTINENTS CONNECT:

ENHANCING THE GEOSPATIAL MATURITY OF SOCIETIES

Ideas for commission 8 - collaboration



ORGANISED BY



MAIN SUPPORTERS



PLATINUM SPONSOR





XXVI FIG Congress 2018

6-11 May 2018 ISTANBUL

EMBRACING OUR SMART WORLD WHERE THE CONTINENTS CONNECT:

ENHANCING THE GEOSPATIAL MATURITY OF SOCIETIES

Thank you for your attention

ORGANISED BY



MAIN SUPPORTERS



PLATINUM SPONSORS

