

metropoleruhr
 Regionalverband Ruhr

DAS RUHRGEBIET.

Das Ruhrgebiet lebt
 The Ruhr Area is alive

LANDMANAGEMENT OF FORMER INDUSTRIAL LANDSCAPES IN THE ECONOMIC METROPOLIS RUHR

Manfred BOTTMEYER, Germany

FIG Working Week Marrakech 2011





Manfred Bottmeyer - FIG Marrakech

metropoleruhr
 Regionalverband Ruhr

DAS RUHRGEBIET.

Regionalverband Ruhr

LANDMANAGEMENT OF FORMER INDUSTRIAL LANDSCAPES

Federal Republic of Germany

Manfred Bottmeyer - FIG Marrakech

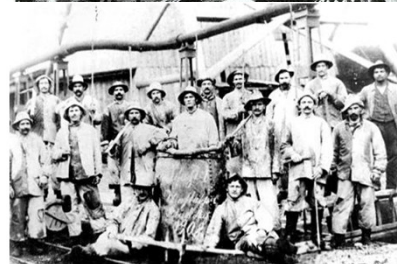
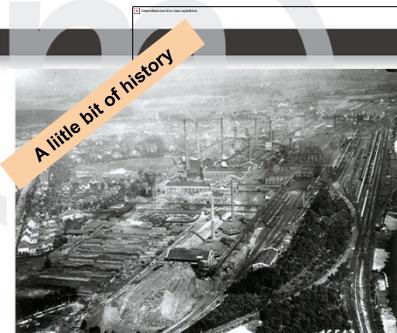
The area of the Regionalverband Ruhr

The Ruhr Region

11 Towns
4 Counties
Area: 4.435 km²
Inhabitants: 5.2 Mio.



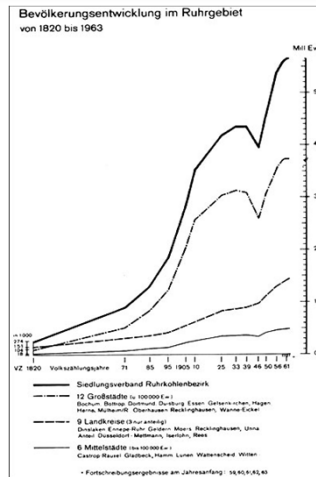
Manfred Bottmeyer - FIG Marrakech



The Former Ruhr Area



Population development in the Ruhr Area from 1820 to 1960



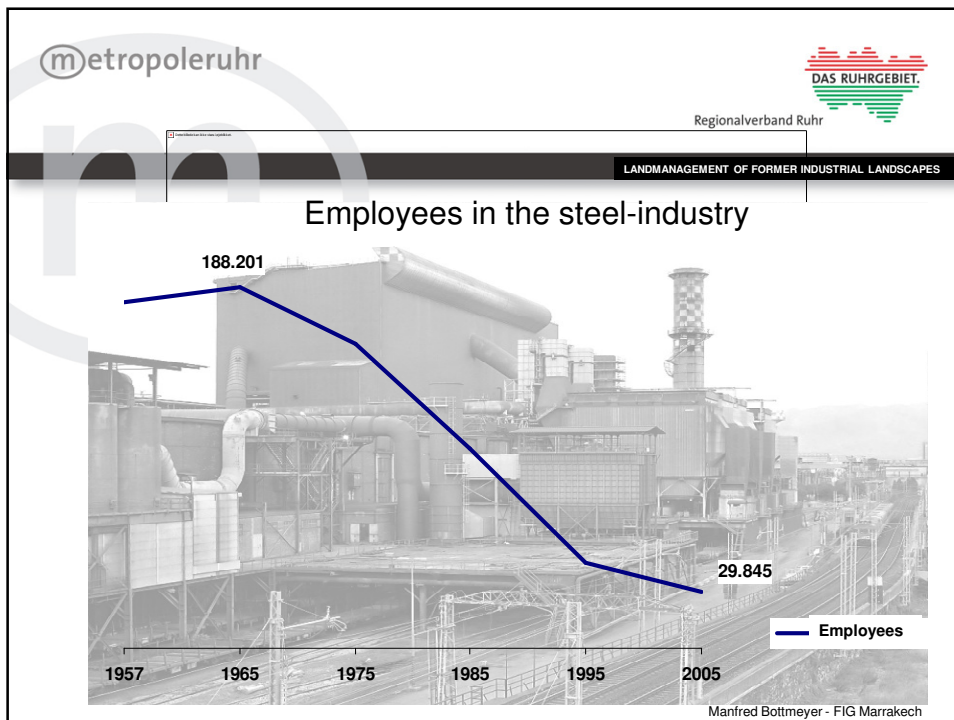
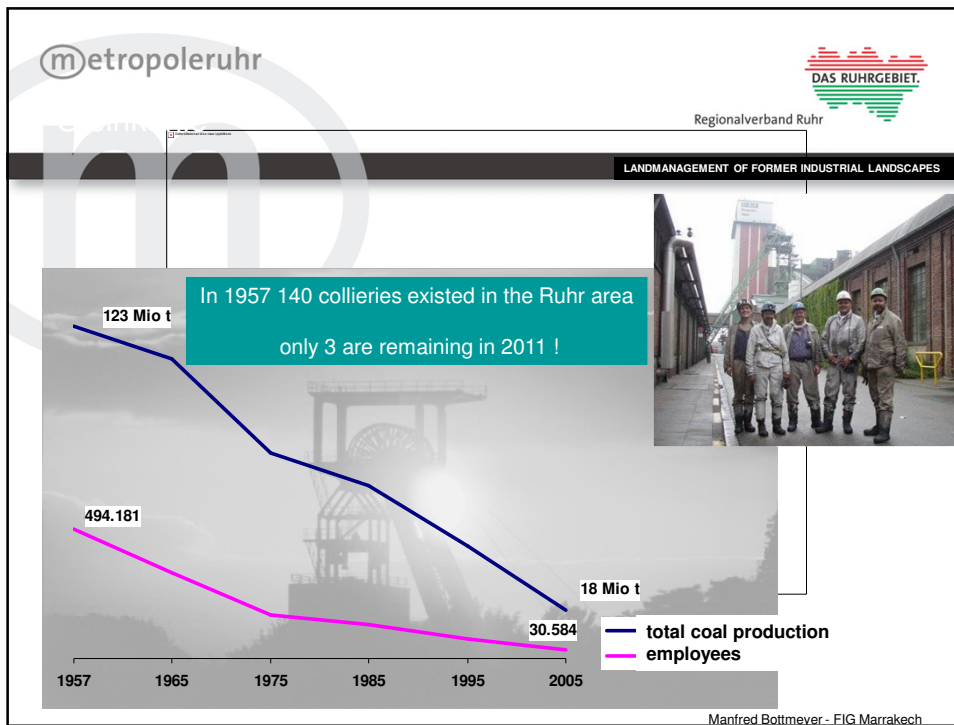
Manfred Bottmeyer - FIG Marrakech

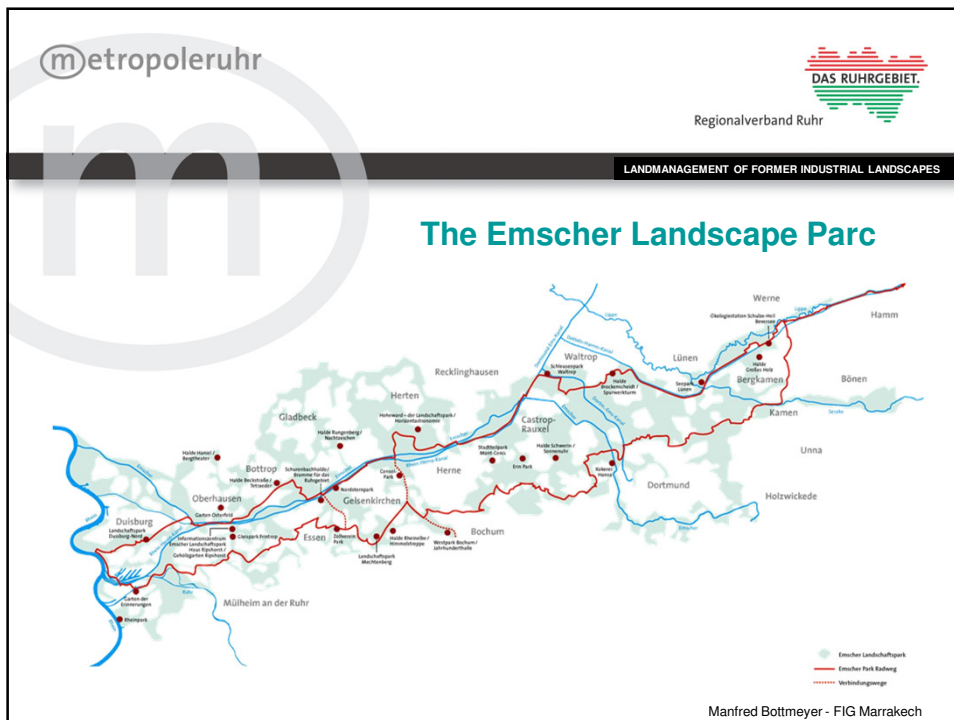
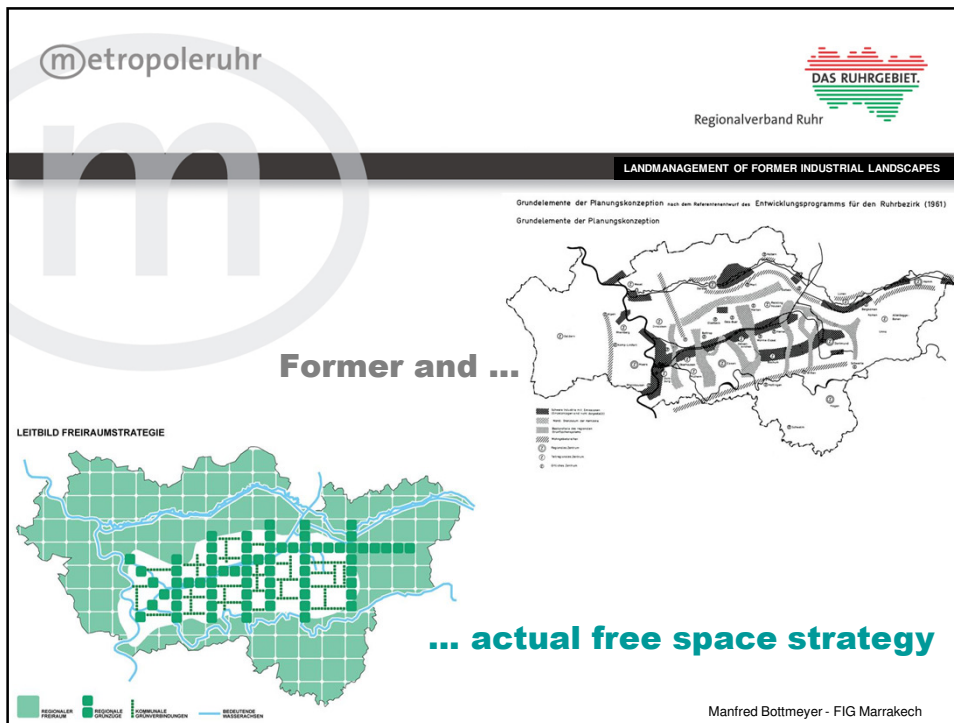
Kind regards from the cannon town ...

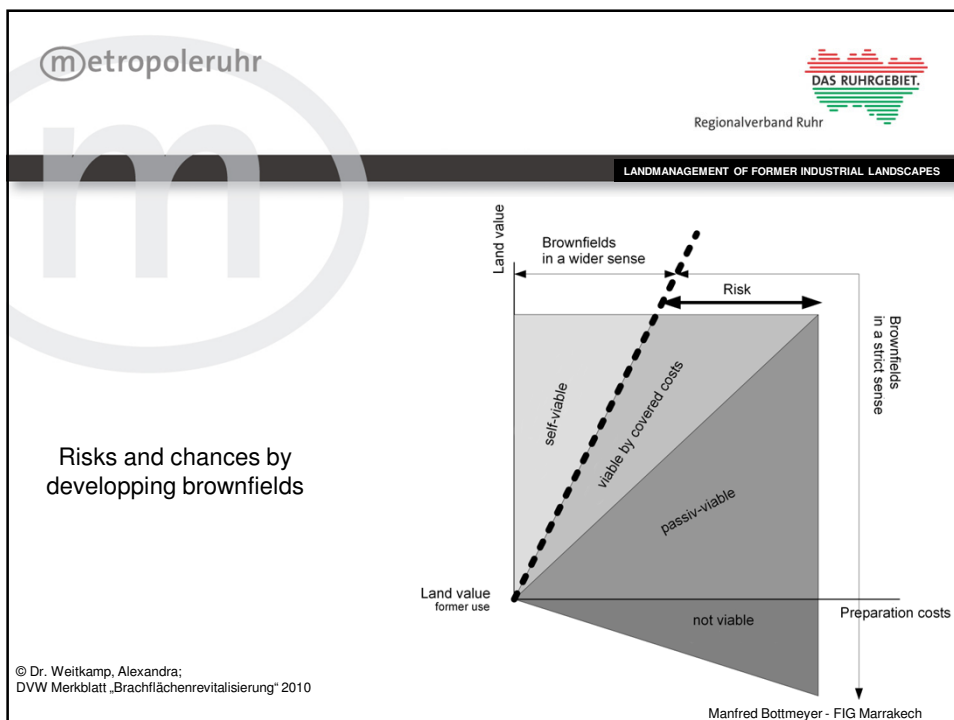
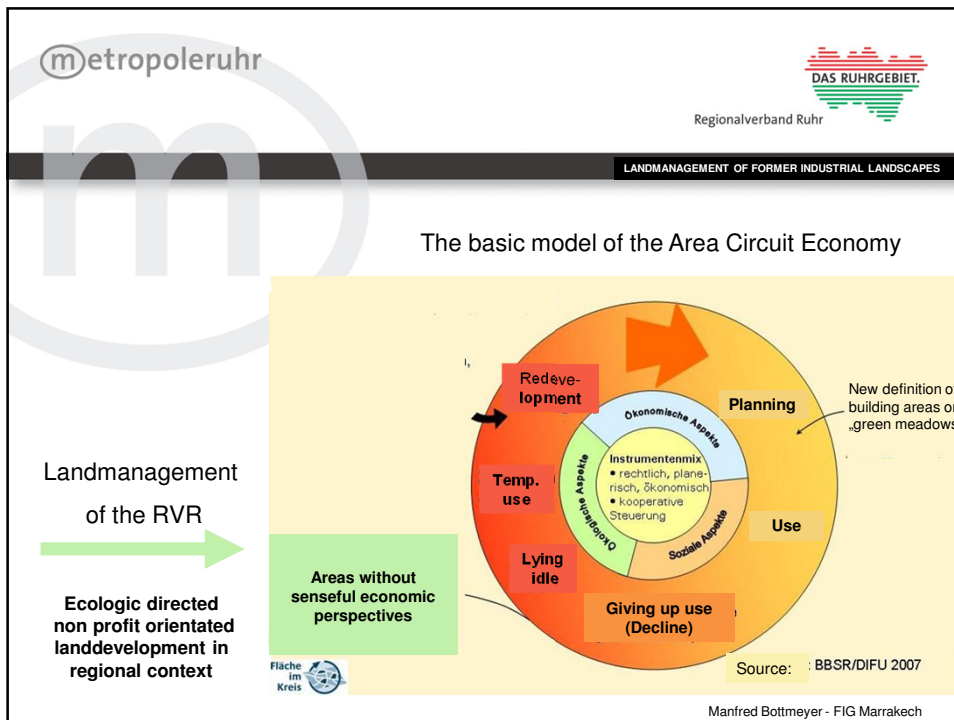


... and from soot-land !

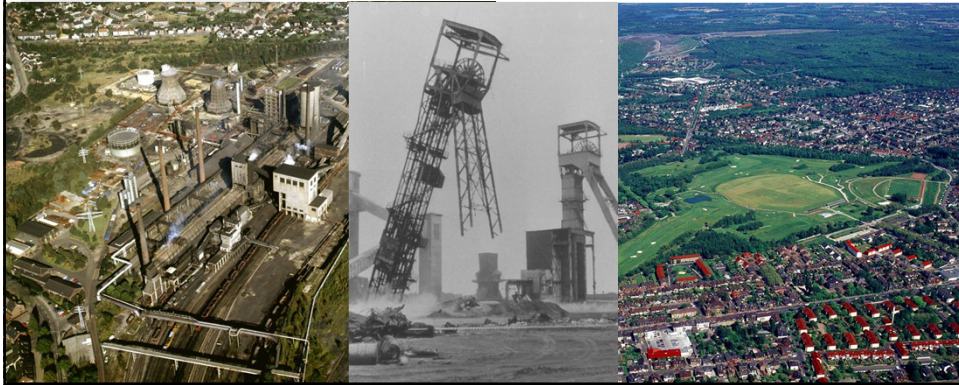
Manfred Bottmeyer - FIG Marrakech



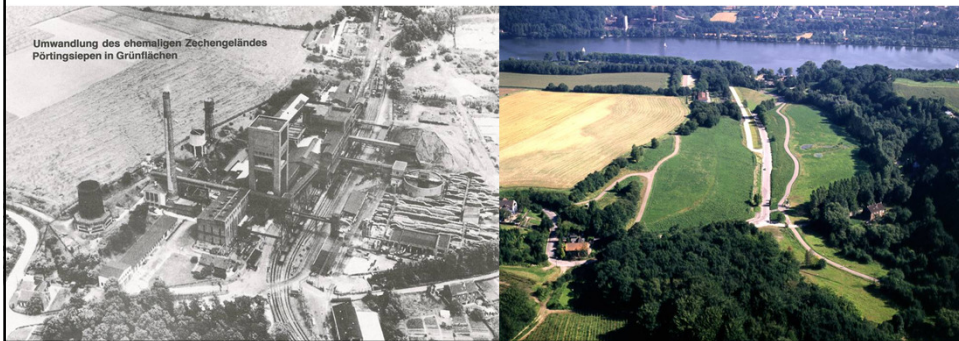




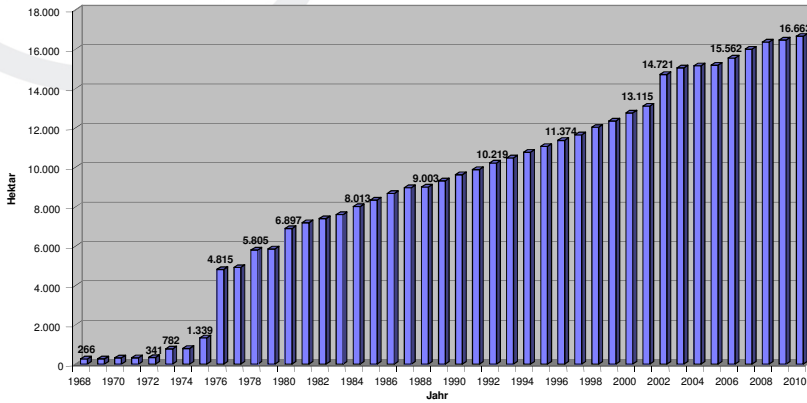
Former Industrial Waste Land Now Golf Course



Industrial Waste Land Collierie Pörtingsiepen

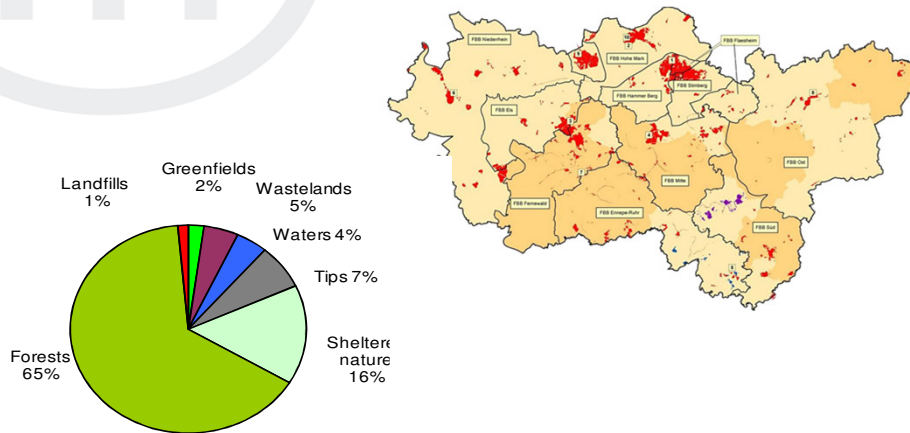


Development of the Property of the Regional Association Ruhr from 1968-2010



Manfred Bottmeyer - FIG Marrakech

Local distribution and structure of the RVR-Property



Manfred Bottmeyer - FIG Marrakech

Dredging and sand mining
have left their marks at
many places ...

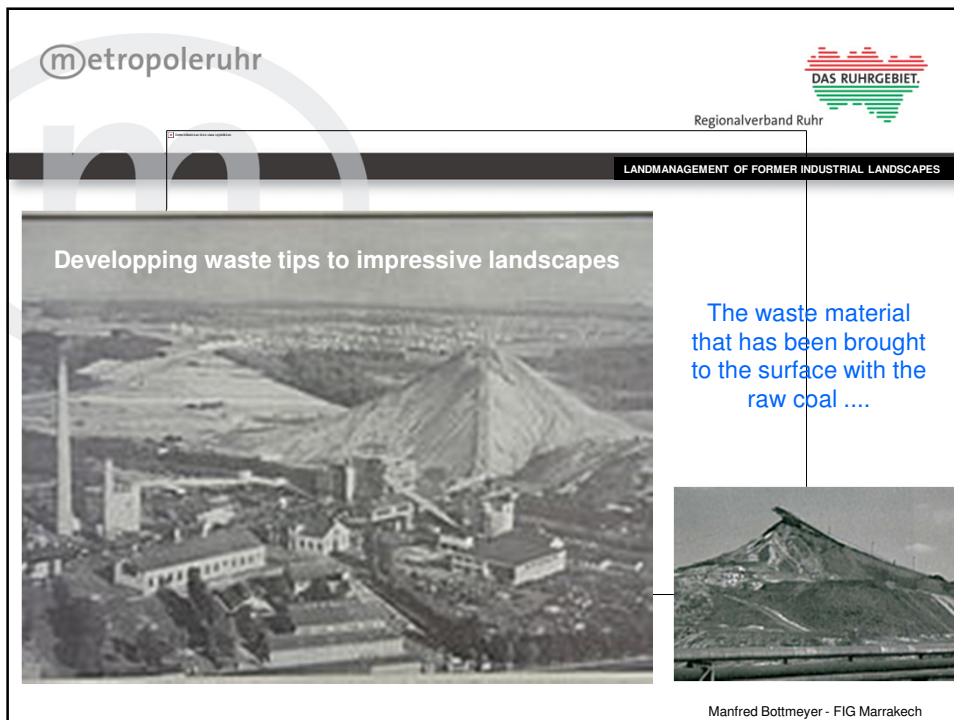
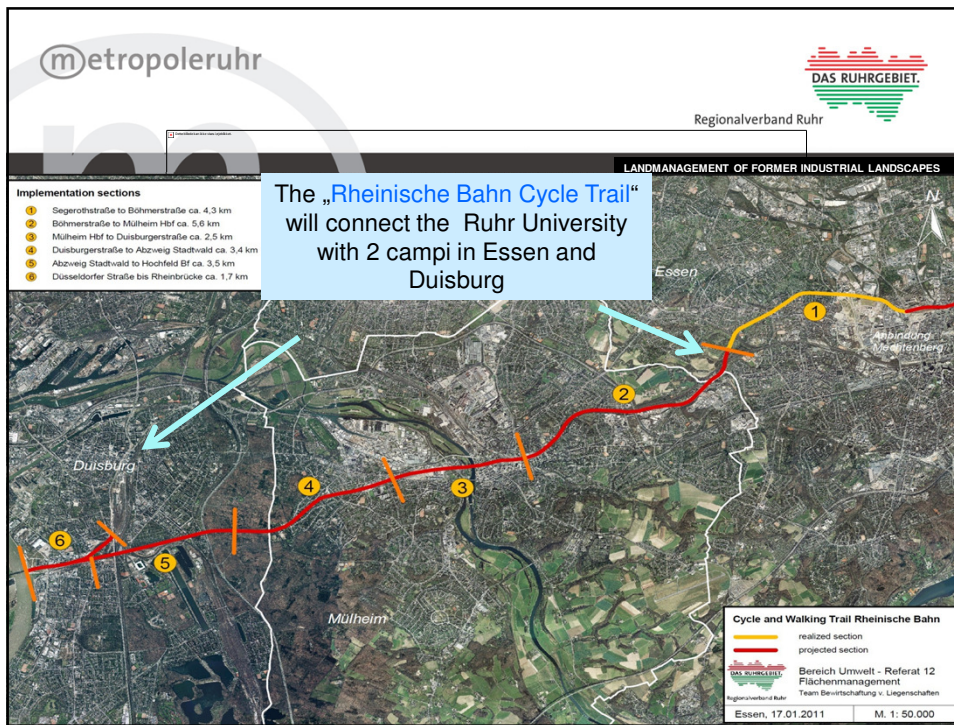


Manfred Bottmeyer - FIG Marrakech

... which are developed to recreation areas



Manfred Bottmeyer - FIG Marrakech



1. Generation

Conical tips

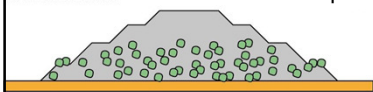


... is used to build small mountains formed like natural landscapes ...

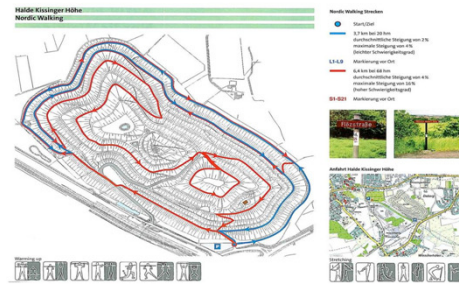
... so that different species of plants and animals can find a new habitat there. Even the residents benefit from that: These mountains have become parts of the so called "green lungs" in the Ruhr area and by that they are popular greenbelt recreation areas.

2. Generation

Table tips



© ERA Design nach Grafik RAG



Manfred Bottmeyer - FIG Marrakech

3. Generation

Landscaping projects



Hoheward –The Landscape Parc

Together with the Hoppenbruch tip the Hoheward tip form the largest tips landscape in Europe. The highest point of the tip has already been reached at a height of 152.5 m above sea level, but probably they will heap up mine waste material on the west flank up to 2012. The Hoheward and Hoppenbruch tips are part of the "Industrial Heritage Trail" and of the Hoheward landscape park.

© www.wikipedial.de



© www.steinkohle-portal.de

Manfred Bottmeyer - FIG Marrakech

metropoleruhr

DAS RUHRGEBIET
Regionalverband Ruhr

LANDMANAGEMENT OF FORMER INDUSTRIAL LANDSCAPES

Hoheward - The Landscape-Park

Manfred Bottmeyer - FIG Marrakech

metropoleruhr

DAS RUHRGEBIET
Regionalverband Ruhr

LANDMANAGEMENT OF FORMER INDUSTRIAL LANDSCAPES

Bahnbetriebswerk Bismarck 1928

Bahnhof

Conservation of historical railway infrastructure

RuhrtalBahn
Kraftwerk erleben - erleben

Bahnwerk Bismarck
Gelsenkirchen

Railway-Museum
Bochum-Dahlhausen

© D-Luftbild.de

Manfred Bottmeyer - FIG Marrakech



The Dragon-Bridge

The Ore-Rail-Bridge



The reconstructed Pillar-Bridge



Europe's most beautiful bridge

GELSENKIRCHEN. Europe's most beautiful bridge has been constructed in Gelsenkirchen. The **Grimberg-Bridge** traverses the Rhein-Herne-Canal with only one elegant swing.



The award winning bridge at the Gelsenkirchen Grimberg port. (Foto: Malinowski)

Ruhr Nachrichten.de
Mittwoch, 18. August 2010

Manfred Bottmeyer - FIG Marrakech

Save the Date !



INTERGEO®

Kongress und Fachmesse für Geodäsie,
Geoinformation und Landmanagement

Englisch | Seitenübersicht |

Die INTERGEO Kongress Messe Aussteller-Service INTERGEO TV Presse & News My GEOzone365



Intergeo 2013, 8. bis 10. Oktober in Essen

Manfred Bottmeyer - FIG Marrakech



Thank you for your kind attention !

Manfred Bottmeyer
Referatsleiter Flächenmanagement
bottmeyer@rvr-online.de

www.metropoleruhr.de