


3D City GIS

Ben Fredericque, Product Manager,
Geospatial



Sustaining Infrastructure

Agenda

- Why 3D City GIS?
- What does 3D City GIS mean?



Why 3D City GIS?

I like
3D !!!



3 of 60 | WWW.BENTLEY.COM

For sustaining Infrastructure



4 of 60 | WWW.BENTLEY.COM

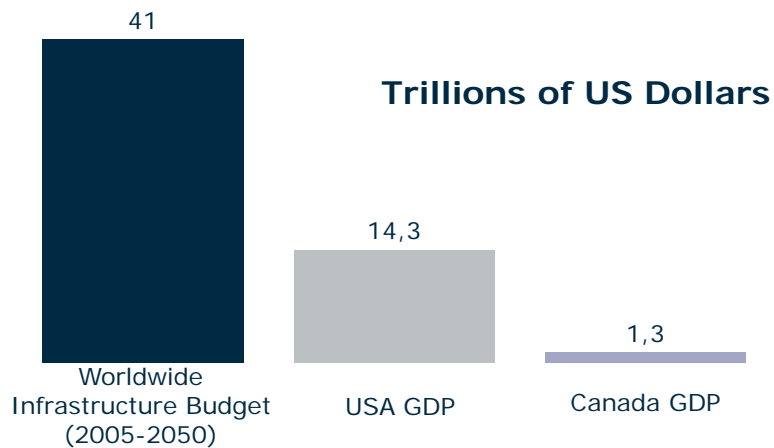
Infrastructure defined



5 of 60 | WWW.BENTLEY.COM

Addressing Infrastructure needs...

...a challenge for our economy



Sources: Booz Allen Hamilton, Global Infrastructure Partners, World Energy Outlook, Organization for Economic Co-operation and Development (OECD), Boeing, Drewry Shipping Consultants, U.S. Department of Transportation



6 of 60 | WWW.BENTLEY.COM

Better infrastructure for Public safety



7 of 60 | WWW.BENTLEY.COM

Better infrastructure for Public safety



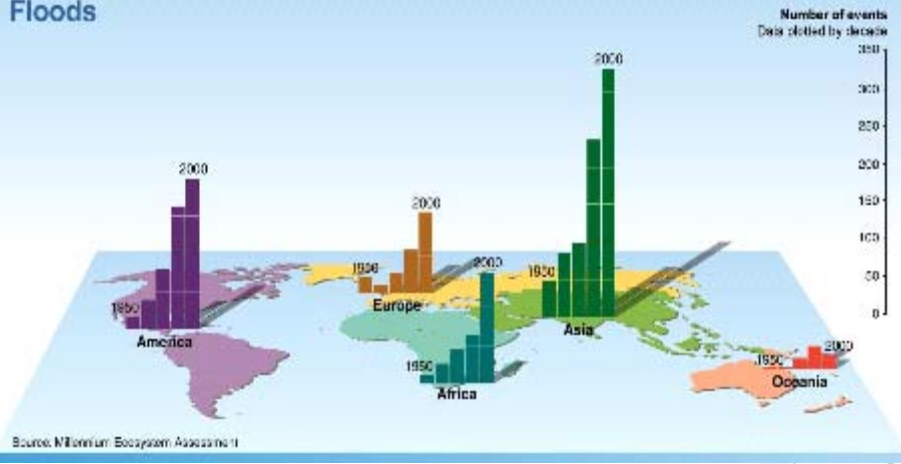
8 of 60 | WWW.BENTLEY.COM



Needs are growing...

...Climate changes

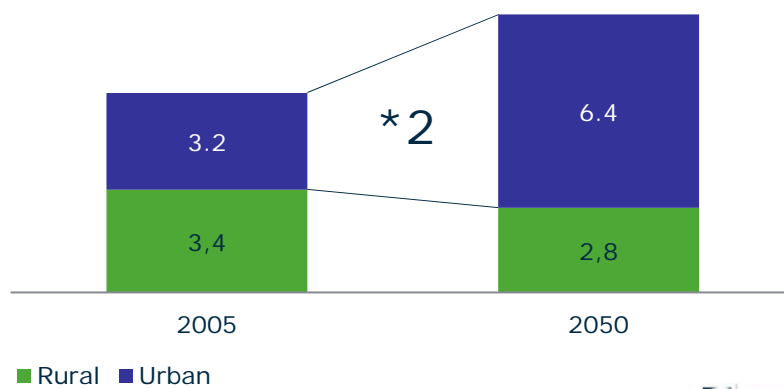
Floods



9 of 60 | WWW.BENTLEY.COM

Needs are in Cities

Worldwide Population (Millions)



10 of 60 | WWW.BENTLEY.COM



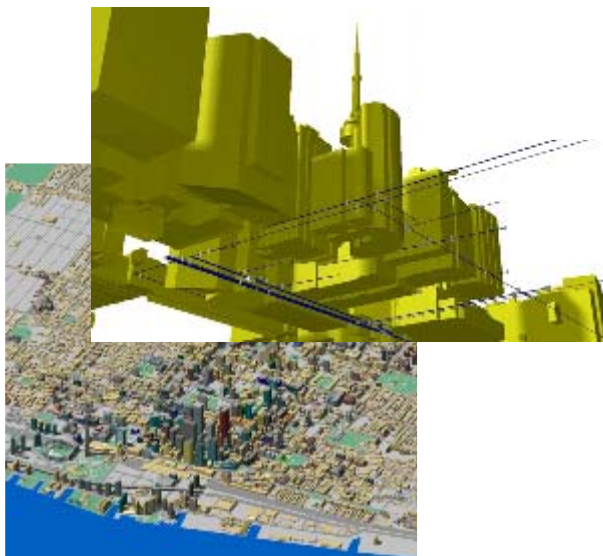
Infrastructure needs are

- Important for people security & well being
- Worldwide
- Increasing
- Important for our Economy
- Going to increase mainly in Cities



11 of 60 | WWW.BENTLEY.COM

3D City GIS for sustaining infrastructure



12 of 60 | WWW.BENTLEY.COM

What does 3D City GIS mean?



13 of 60 | WWW.BENTLEY.COM

3D City GIS

- It's an information management systems using **3D City model as a platform**



14 of 60 | WWW.BENTLEY.COM

3D City GIS aims at

- Optimizing infrastructure data management across city territory
"Towards seamless integration between geo and engineering content"



15 of 60 | WWW.BENTLEY.COM

3D City GIS Components



16 of 60 | WWW.BENTLEY.COM

3D City GIS Components



17 of 60 | WWW.BENTLEY.COM

3D City GIS allows

- Taking benefits of 3D City visual simulation :
 - Urban planning simulation
 - Tourism promotion
 - Project communication with citizens/media
 - Team collaboration
 - ...



18 of 60 | WWW.BENTLEY.COM

Examples of virtual images rendered with MicroStation



19 of 60 | WWW.BENTLEY.COM

3D City GIS allows

- Doing more than Visualization
 - Integrating different assets in a same 3D environment
 - Analyzing and Designing in 3D at the City/Campus Scale



20 of 60 | WWW.BENTLEY.COM

3D reality sometimes needs ...

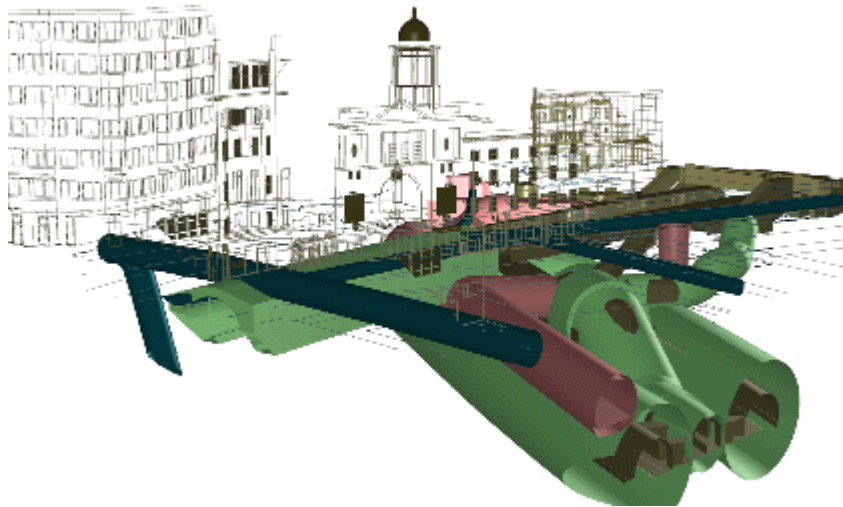
...3D Analysis & Designs



21 of 60 | WWW.BENTLEY.COM

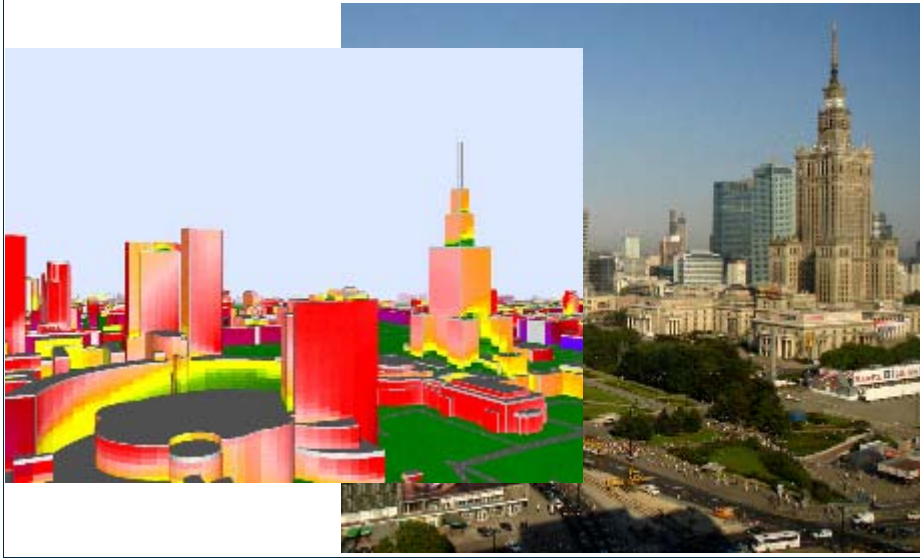
3D reality sometimes needs ...

...3D Analysis & Designs



22 of 60 | WWW.BENTLEY.COM

Noise simulation -Warsaw



23 of 60 | WWW.BENTLEY.COM

Flood simulation



24 of 60 | WWW.BENTLEY.COM

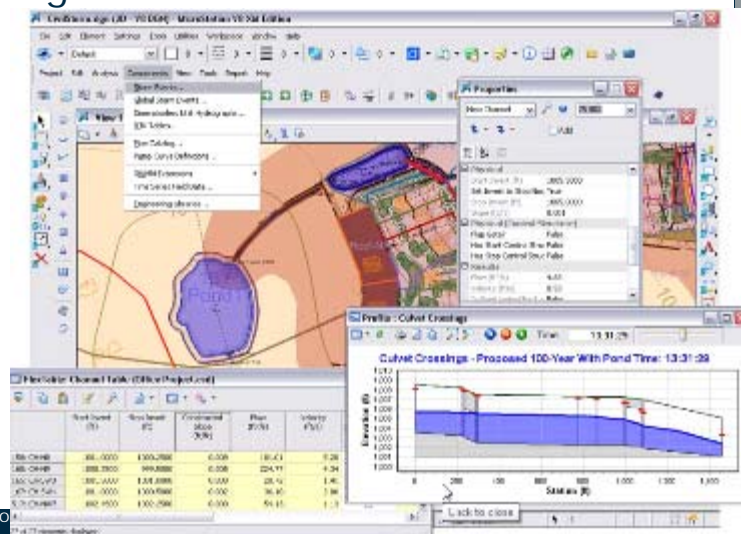
Flood simulation



26 of 60 | WWW.BENTLEY.COM

Designing

- Improving storm water infrastructure



26 of 60 | WWW.BENTLEY.COM

3D City GIS Components



27 of 60 | WWW.BENTLEY.COM

Persist, Serve and Manage ?

Maps Images DTMs
(SpatialDB, SHP, DB, GeoTIFF, DGN, DWG, ...) (GeoTIFF, ASCII, SID, ECW, JP2, LAS, DTE, DB, ...)

GIS Data

Designs Plans/Profiles
(DWG, DGN, ...) (DWG, DGN, PDF, ...)

CAD/CAE Data

3D Design Construction
(DWG, DGN, PLN, ...) LifeCycle (IFC)

BIM Data



28 of 60 | WWW.BENTLEY.COM

Persist, Serve and Manage ?



- Support for different repository types:
 - Files: Standards (CityGML, IFC, PDF, KML, ...) or Proprietary (DGN, DWG, SHP, ...)
 - Databases: Oracle Spatial, SQL Server
 - Web Services: WMS, WFS, ...



29 of 60 | WWW.BENTLEY.COM

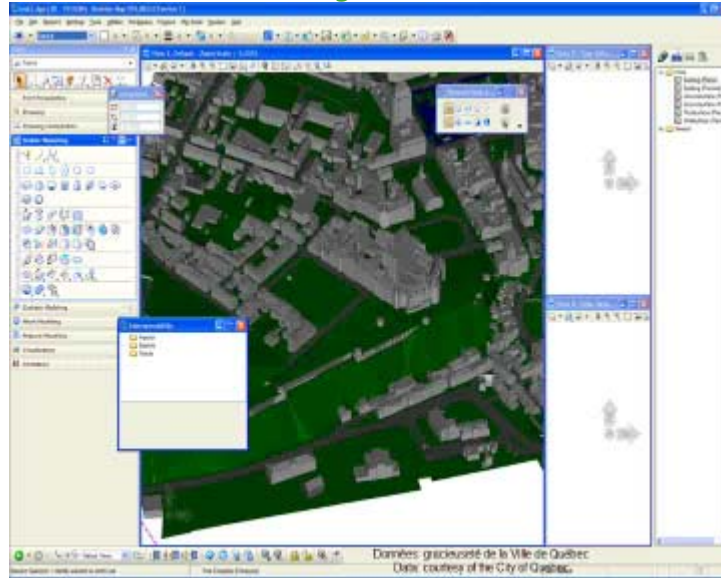
How to Persist, Serve and Manage ?

- Example of strategy:
 - 3D City Model overview
 - Database for covering large areas
 - Files for smaller areas and for exchanging (ex: CityGML, IFC)
 - Detailed engineering and architectural designs
 - Files, with an association to overview model and indexing of content (ex: DGN, DWG, IFC, ...)



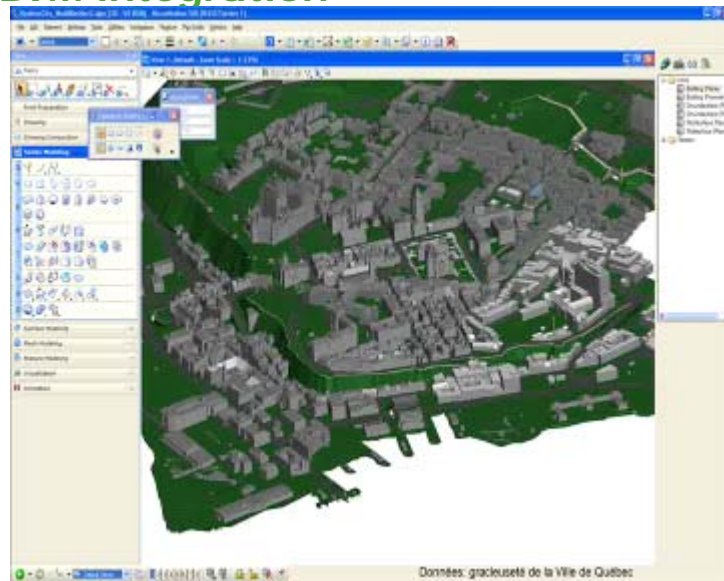
30 of 60 | WWW.BENTLEY.COM

Demo—Post 3D City Model in Oracle



31 of 60 | WWW.BENTLEY.COM

GIS\BIM integration



32 of 60 | WWW.BENTLEY.COM

How to create and update a 3D City Information Model?

3D Modeling and Quality Control

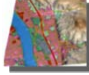




Persist, Manage and Serve

Explore, Analyze and Design in 3D



33 of 60 | WWW.BENTLEY.COM

3D Modeling Techniques

	Aerial		Terrestrial			ETL
	Photogrammetry	LIDAR	Mobile LIDAR & Photogrammetry	Static LIDAR & Photogrammetry	Land Surveying	
0-DTM 						
1- Blocks 						
2-Textures, roof 						
3- Detailed 						
4-Interior 						

34 of 60 | WWW.BENTLEY.COM

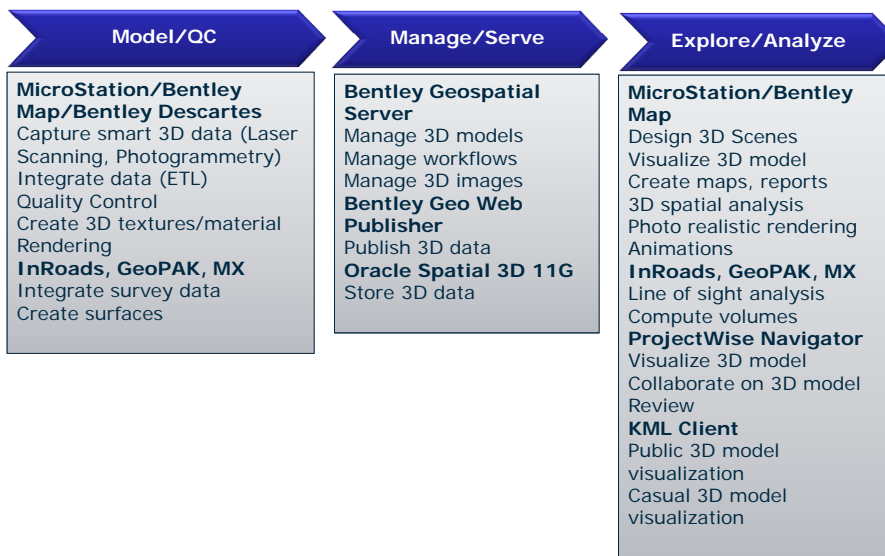
We can help...

- 3D Modeling
 - **MicroStation, Bentley Map**
- Aerial Photogrammetry
 - Leica LPS-PRO600 for **PowerMap**; Intergraph ISFE for **MicroStation**; DVP; DATEM; ESPA; KLT atlas/DSP; Photomod Racurs; Usmart; VirtuoZo; MSMapper; BOEING IDS / Softplotter
- Aerial LiDAR
 - **Bentley and Terrasolid eSeminar on April 29th.**
- Terrestrial LiDAR
 - PHIDIAS, **CloudWorx**
- Survey
 - **GEOPAK Survey, InRoads Survey, PowerSurvey**



35 of 60 | WWW.BENTLEY.COM

Bentley and Partners can help...



36 of 60 | WWW.BENTLEY.COM

Questions?

Visit our booth!

Benoit.fredericque@bentley.com

<http://www.bentley.com/en-us/promo/3D%20city%20gis>

