



Modernization of the Philippine Geodetic Reference System (PGRS)

Status Report as of 2017

2/23/2016

Modernization of the
PHILIPPINE GEODETIC REFERENCE SYSTEM
STRATEGIC PLAN 2016-2020

2016
2017
2018
2019
2020

Geodesy Division – Mapping and Geodesy Branch
NATIONAL MAPPING AND RESOURCE INFORMATION AUTHORITY

- Components:

Densification of PageNET
Deformation Modelling

Alignment to ITRF and
Migration to Geocentric
Datum (PGD2016)

Development of the
Philippine Geodetic Vertical
Datum 2020 (PGVD2020)

Strengthening of core
competencies, R&D and IEC

- Establish 200 AGS
- Develop Deformation Model

- Compute ITRF Coordinates of Philippine Active Geodetic Network (PageNET)
- Re-Observe Zero, 1st & 2nd Order GCPs

- Densify Gravity Stations
- Re-compute Philippine Geoid Model 2014 (PGM2014)

- Train NAMRIA Staff
- IEC Campaigns
- Amendment of existing laws
- R&D on Modernization

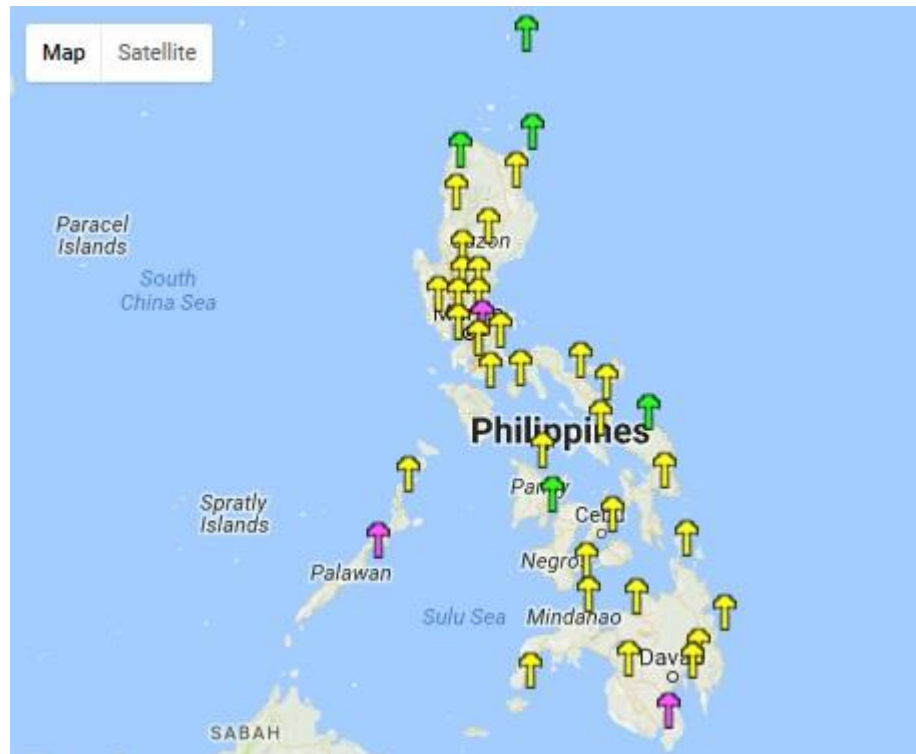
Modernization of PGRS

Densification of PageNET-Status

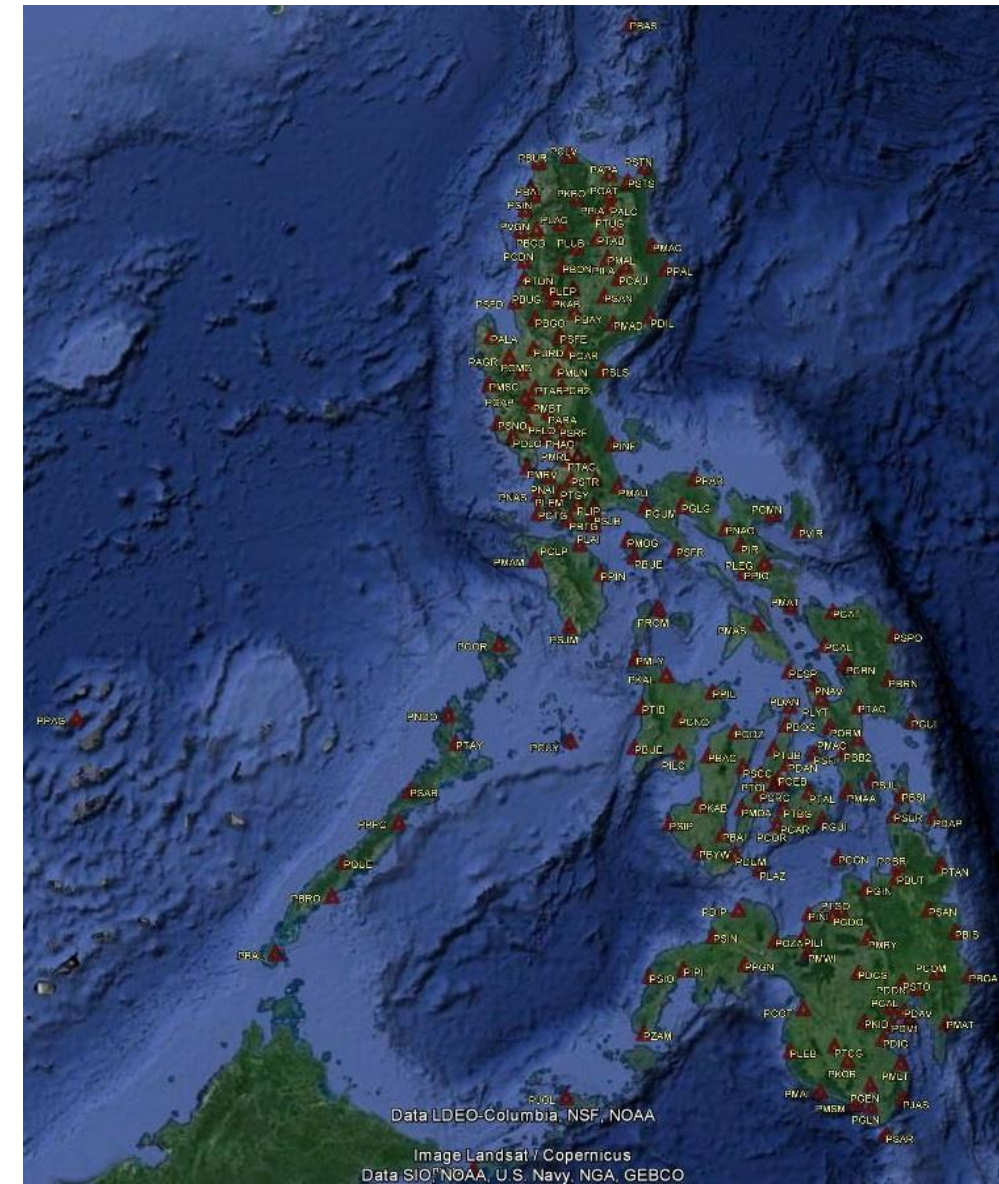
38 Stations Established

Plan to establish 25 sta/year

➤ 3 IGS Site (PTAG, PPC, PGEN)

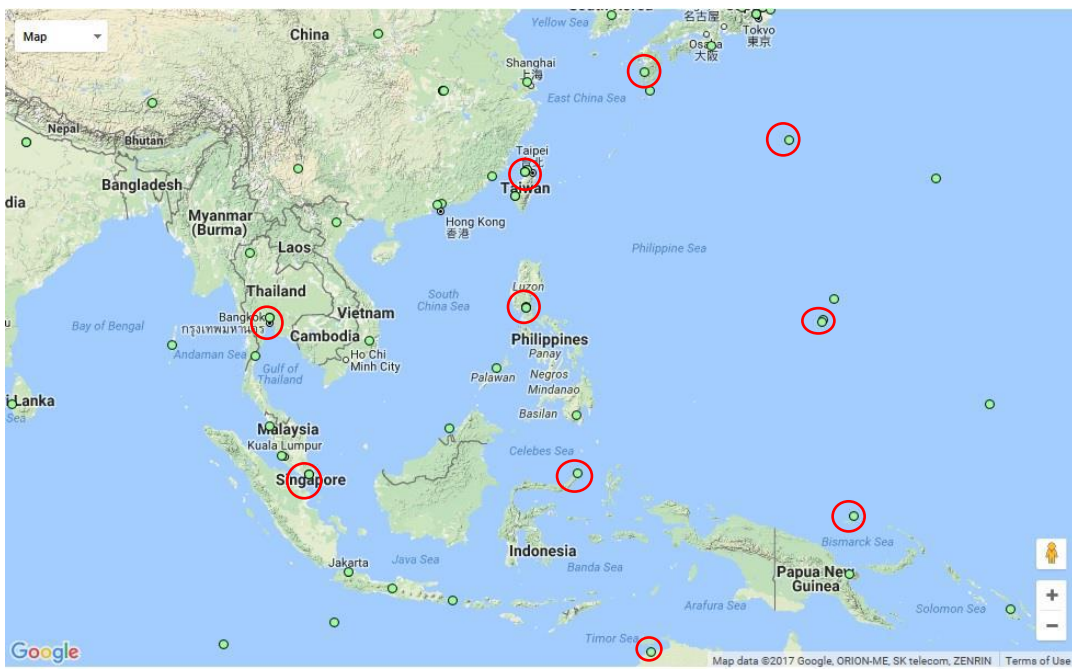


Proposed AGS by 2025 = 200 Stations



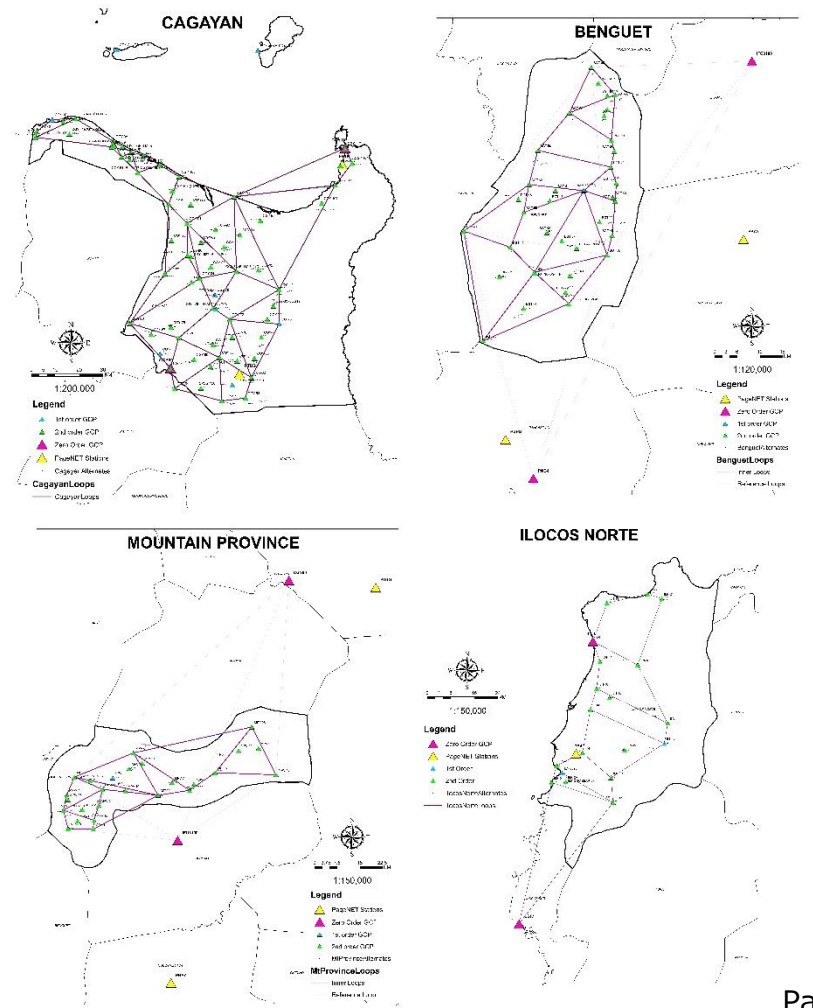
Modernization of PGRS - Status

➤ Alignment to ITRF



Re-Observe GCPs

➤ 995 out of 3000pts

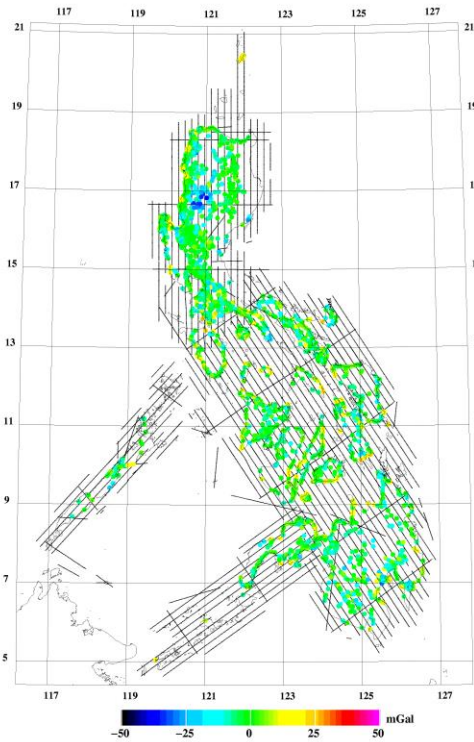


Deformation Modelling

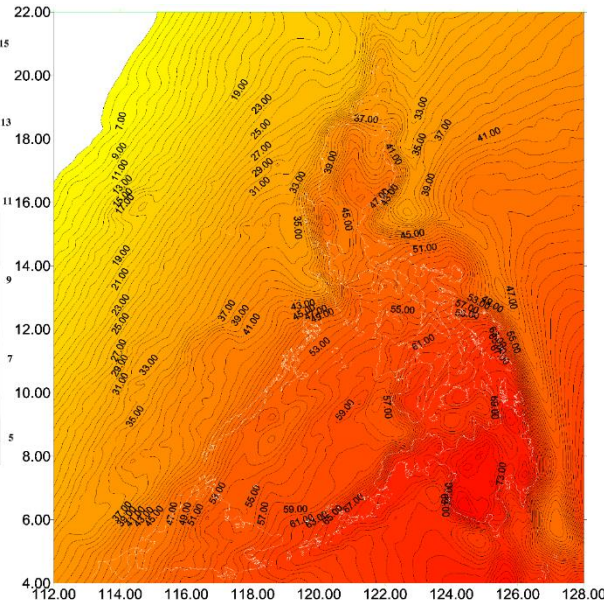
➤ 3-day Dynamic Datum Course with Newcastle University

Densify gravity stations

- 2940 out of 41,000pts



PGM2016



Philippine Geoid Map 2016.93
Local WGS84 fit to Nationwide BMs (N-msl)

Re-compute the Philippine geoid

Capacity Building

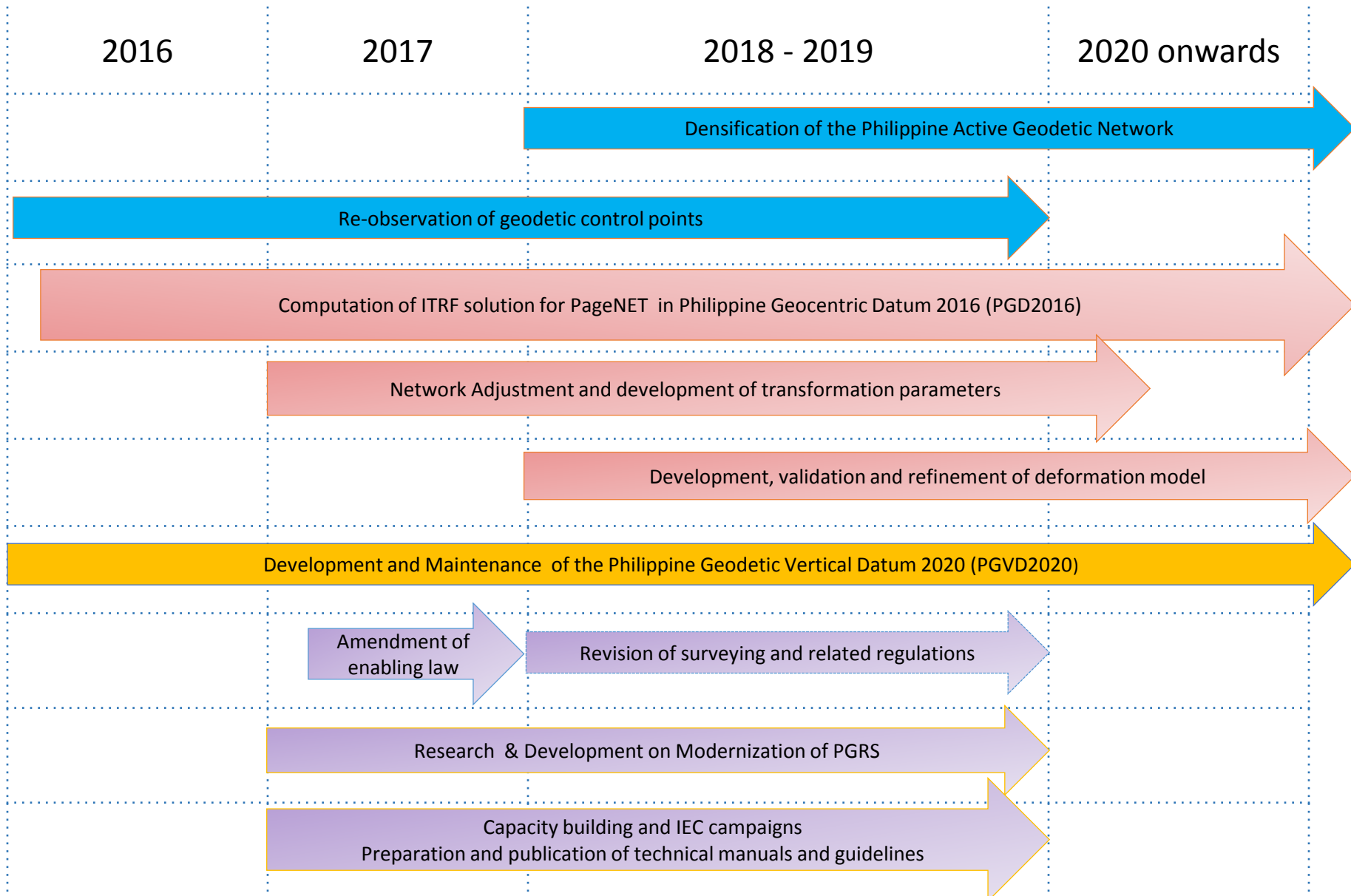
- Seeking for sponsors and training centers on deformation modelling

IEC Campaigns

- Finished the first leg in Manila for the national agencies

R & D on modernization

- Implications of datum change to land titling
- Transformation strategy from existing to new datum





Salamat Po