

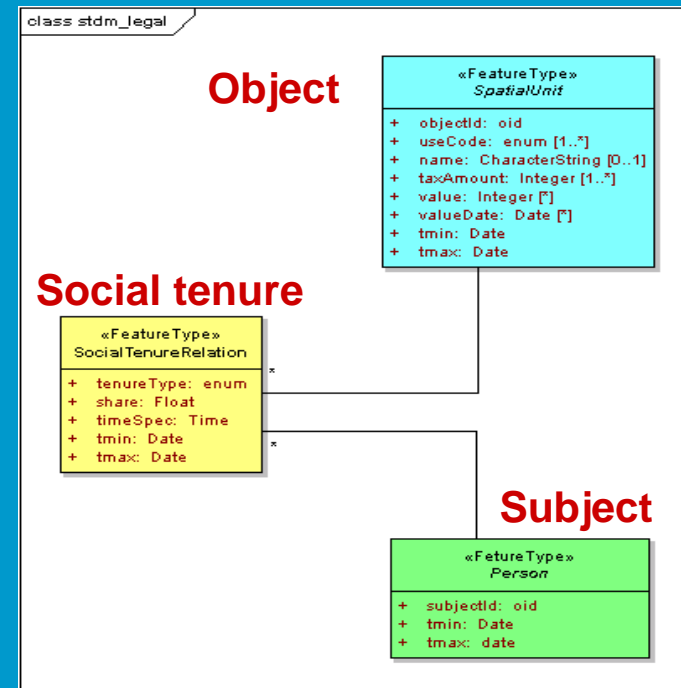
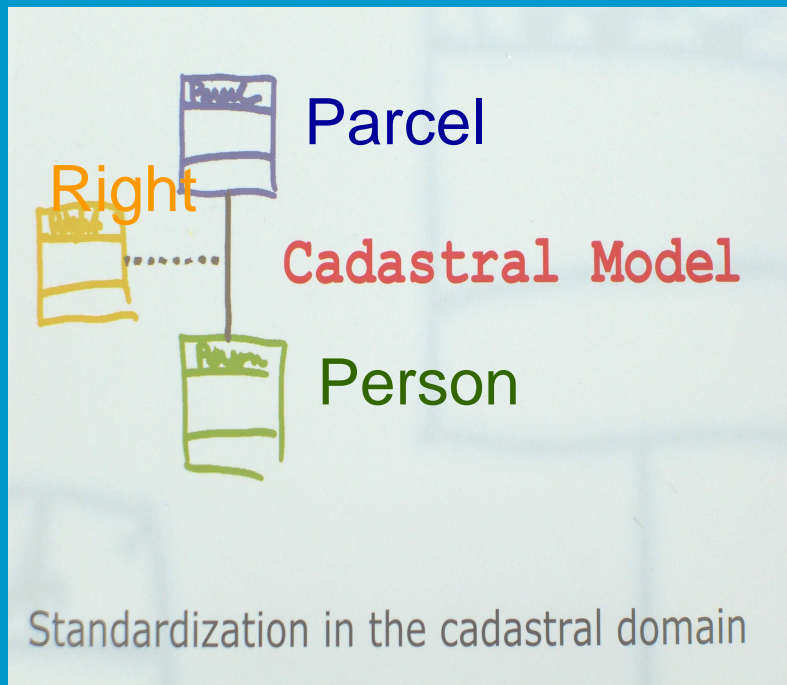
The Social Tenure Domain Model

Christiaan Lemmen
Verona, Italy
September 12th 2008



The Social Tenure Domain Model

Person ↔ Social Tenure Relationship ↔ Spatial Unit



Range of 'Person' - Types

- Group with non-defined membership
- Group
- Group of groups
- Natural Person
- Company
- Municipality
- Co-operatives
- Married couple
- Ministry
- Etc << can be extended

Social Tenure (Relation) - Continuum

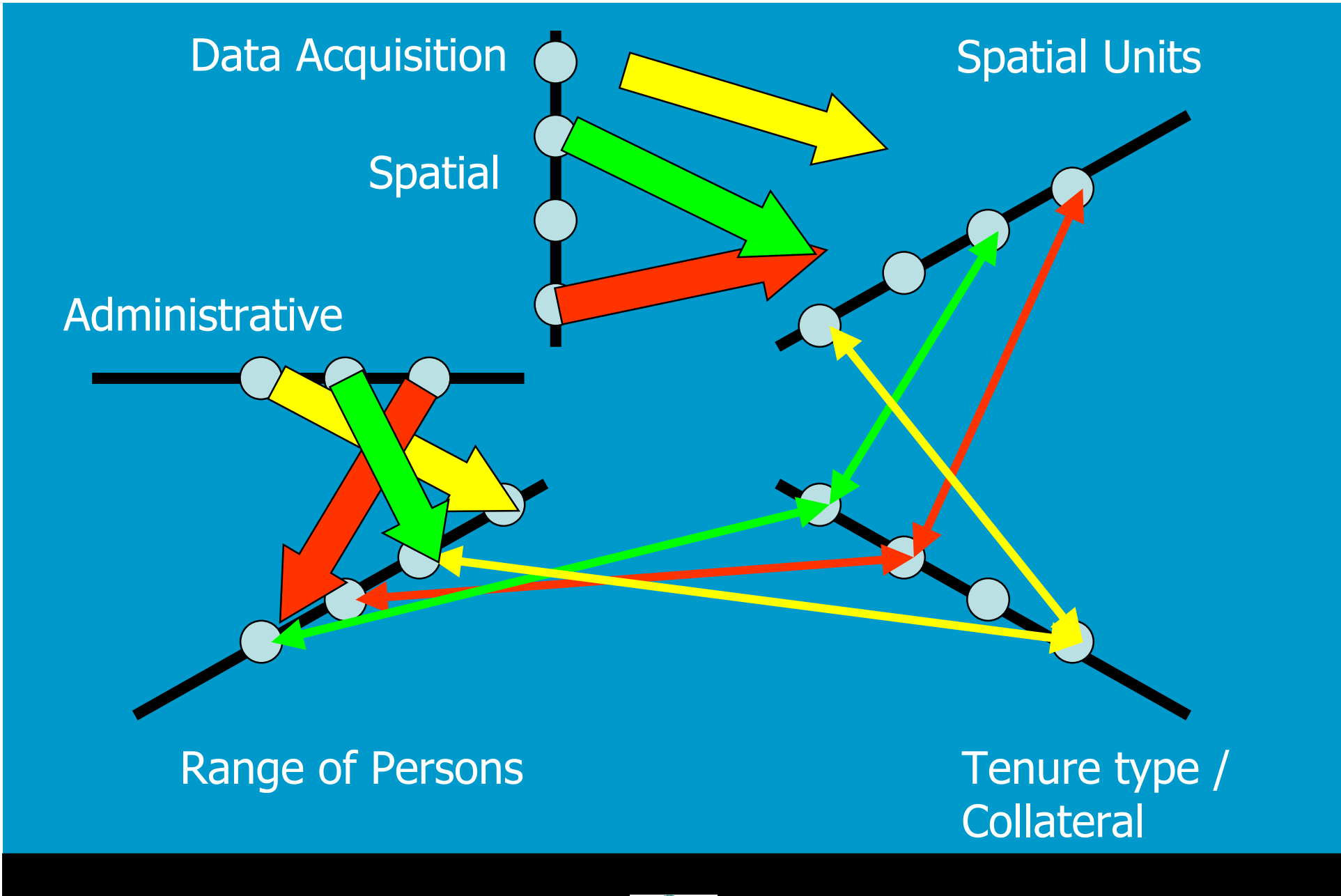
- Ownership
 - Apartment - Right
 - Co-operations
 - Occupation
 - Tenancy
 - Possession
 - Miri – Milk – Waqf
 - Restriction Types
 - State Property
 - Etc << can be extended
- Non-formal and informal rights
 - Customary Types
 - Indigenous Rights
 - Tenancy
 - Possession
 - (Certificate of) Comfort
 - Disagreement
 - Overlap
 - Uncontrolled Privatisation
 - Conflict situations
 - Etc << can be extended

(Social) Credit – ‘Continuum’

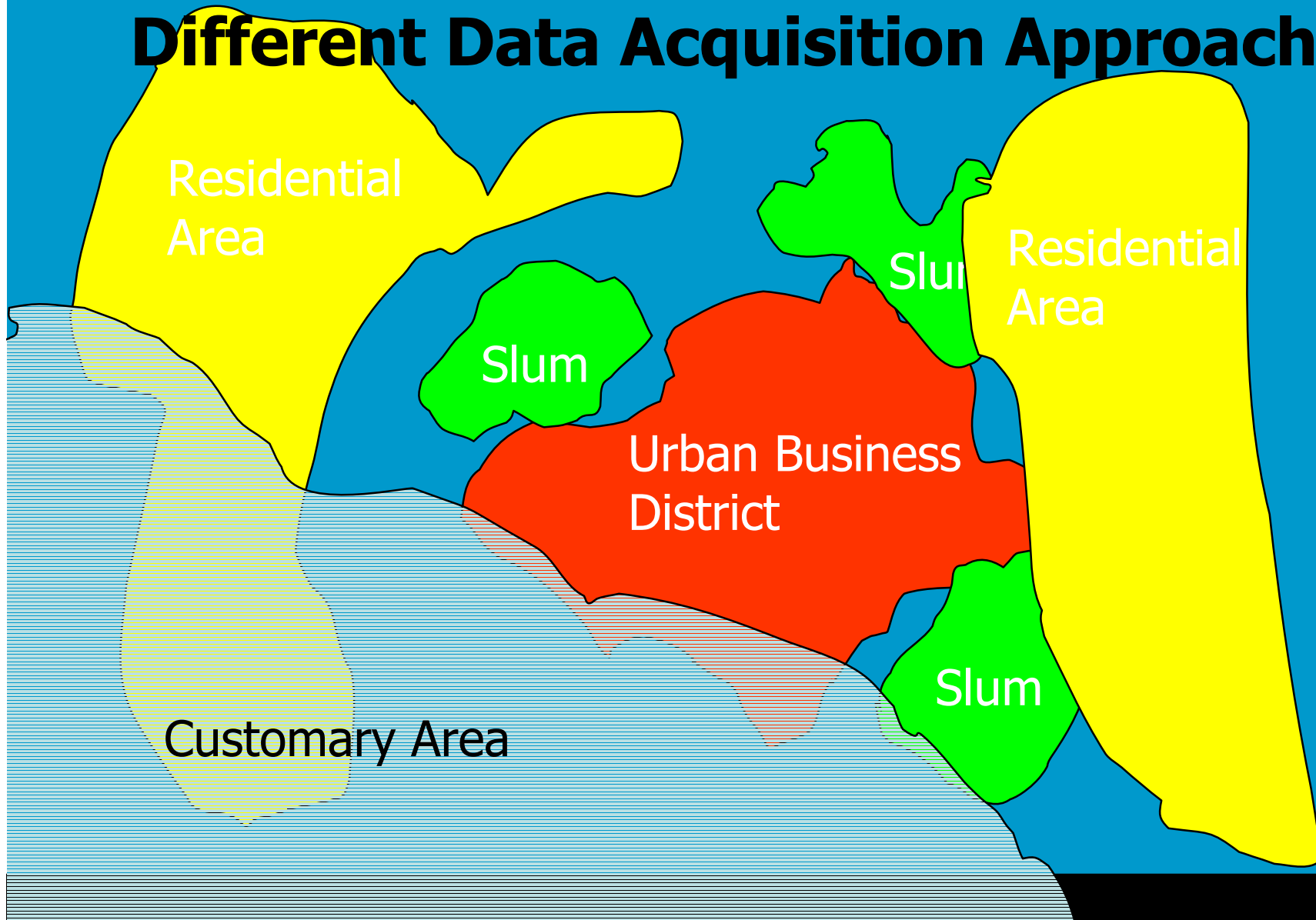
- Micro Credit
- Group Loan
- Individual Loan
- Loan on a Constructed Residence
- Mortgage
- Etc << can be extended
- Risks: people cannot pay!

Spatial Units

- Parcel
 - Apartment
 - Building
 - Etc << can be extended
- One Point - inside polygon
 - One point - street axes
 - Set of Lines
 - Polygon (low accuracy)
 - Polygon (high accuracy)
 - 3D Volume
 - Etc << can be extended
- Quality labels



Different Data Acquisition Approaches



Recognition

- UN Habitat
- Worldbank
- FIG

- Many systems proved not to work in practise
- Simple solutions are required

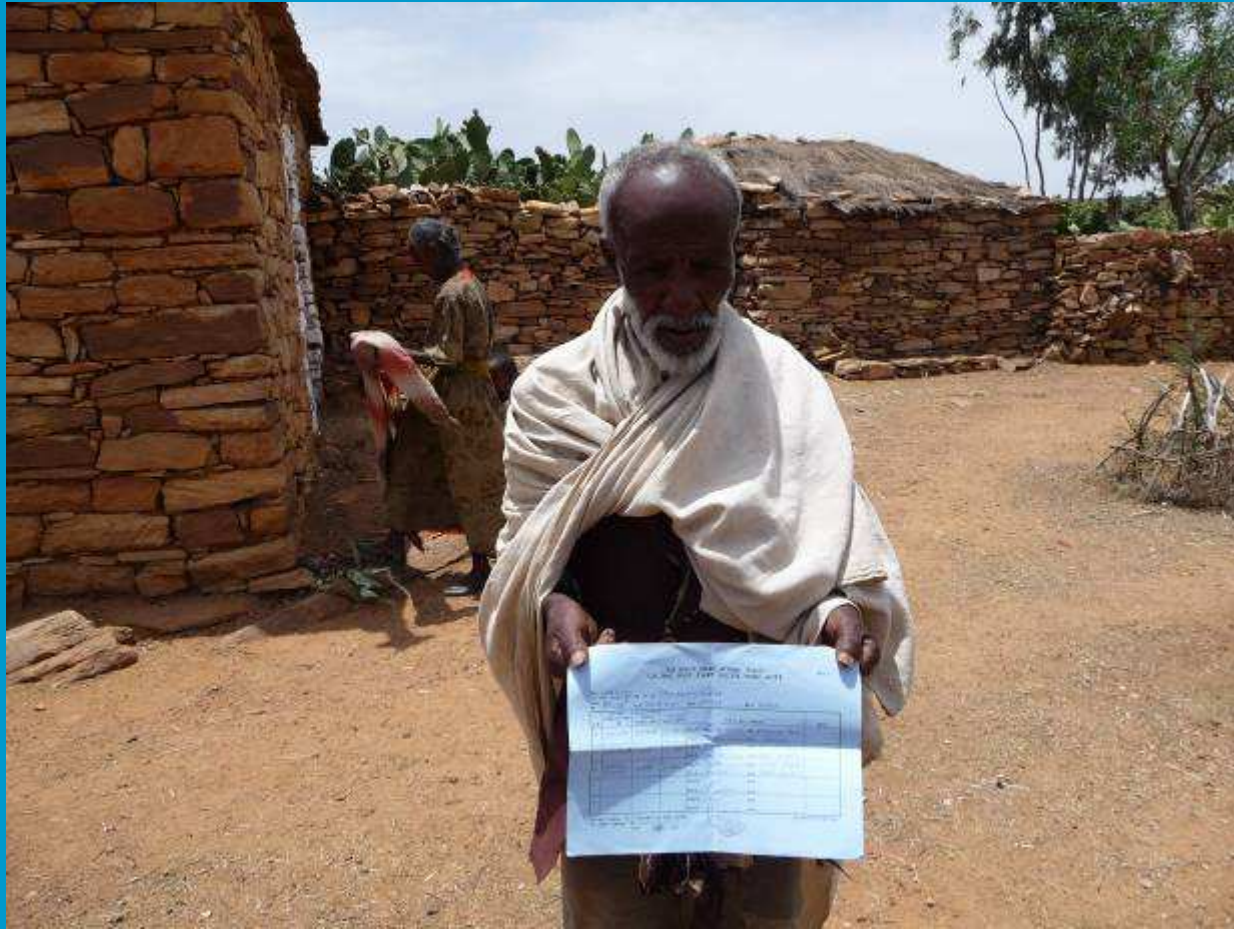
- Prototype – based on ILWIS and PostgreSQL – with UN Habitat

- Scalability will be there later, the basic software can manage a lot of data

Fieldwork in Ethiopia











አክቲቪቲዎች ከልሳዎ መገምገሚያ ገጽ
 የደንበኞች መረጃ ለማሰባሰብ የሚያገለግል ወረቀት

የደንበኞች መረጃ ለማሰባሰብ የሚያገለግል ወረቀት
 የደንበኞች መረጃ ለማሰባሰብ የሚያገለግል ወረቀት
 የደንበኞች መረጃ ለማሰባሰብ የሚያገለግል ወረቀት

ተ.ቁ	አክቲቪቲዎች ክፍል ስም	የደንበኞች መረጃ (የደንበኞች መረጃ)	የደንበኞች መረጃ (የደንበኞች መረጃ)	የደንበኞች መረጃ (የደንበኞች መረጃ)	የደንበኞች መረጃ (የደንበኞች መረጃ)	የደንበኞች መረጃ (የደንበኞች መረጃ)	የደንበኞች መረጃ (የደንበኞች መረጃ)
1	ገንዘብ	0.0320	2 1/2	የደንበኞች መረጃ	የደንበኞች መረጃ	የደንበኞች መረጃ	የደንበኞች መረጃ
2	ገንዘብ	0.0320	0.0320	የደንበኞች መረጃ	የደንበኞች መረጃ	የደንበኞች መረጃ	የደንበኞች መረጃ
3	ገንዘብ	0.0320	0.0320	የደንበኞች መረጃ	የደንበኞች መረጃ	የደንበኞች መረጃ	የደንበኞች መረጃ
4				የደንበኞች መረጃ	የደንበኞች መረጃ	የደንበኞች መረጃ	የደንበኞች መረጃ
5				የደንበኞች መረጃ	የደንበኞች መረጃ	የደንበኞች መረጃ	የደንበኞች መረጃ

የደንበኞች መረጃ ለማሰባሰብ የሚያገለግል ወረቀት
 የደንበኞች መረጃ ለማሰባሰብ የሚያገለግል ወረቀት
 የደንበኞች መረጃ ለማሰባሰብ የሚያገለግል ወረቀት

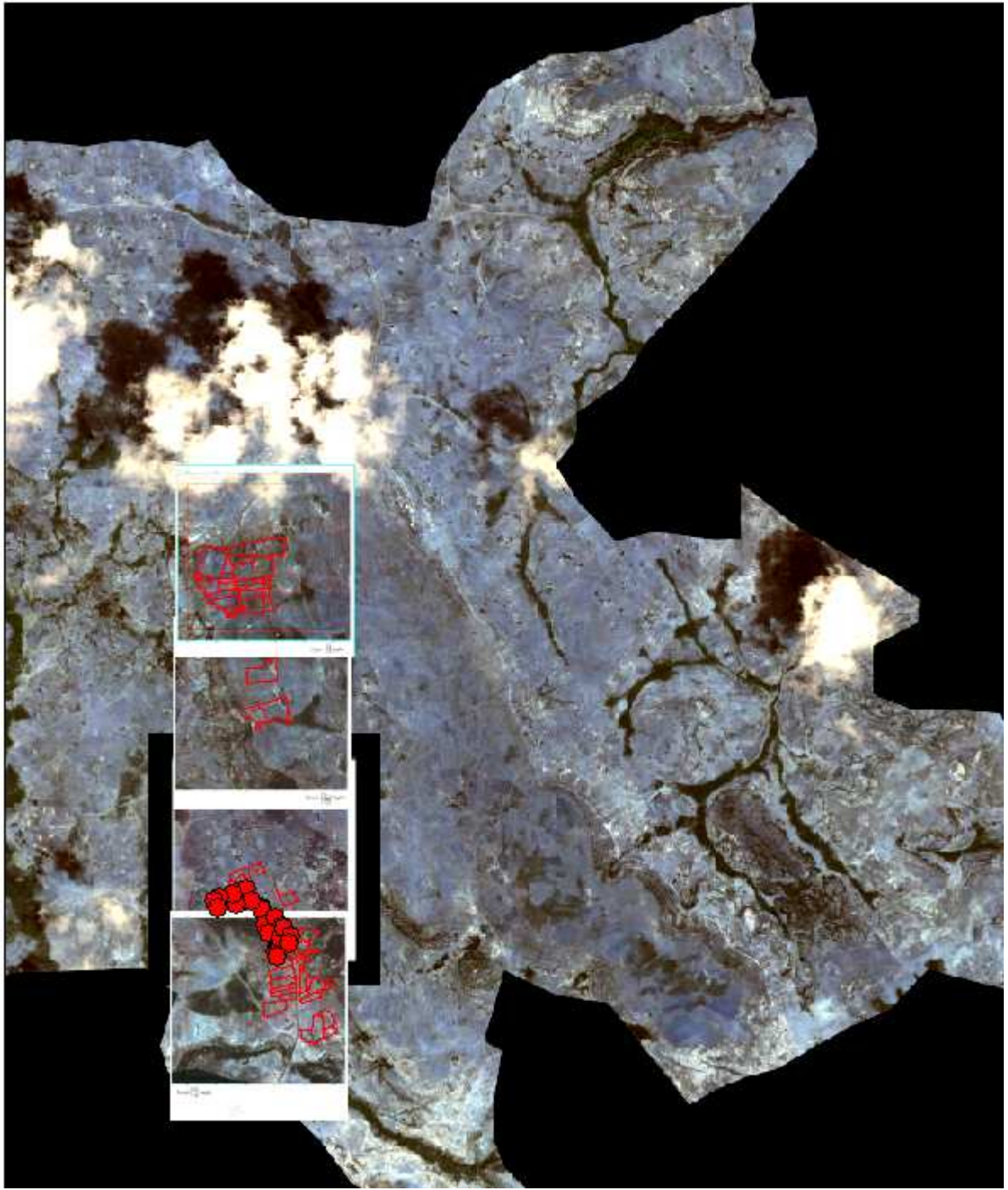


የደንበኞች መረጃ ለማሰባሰብ የሚያገለግል ወረቀት

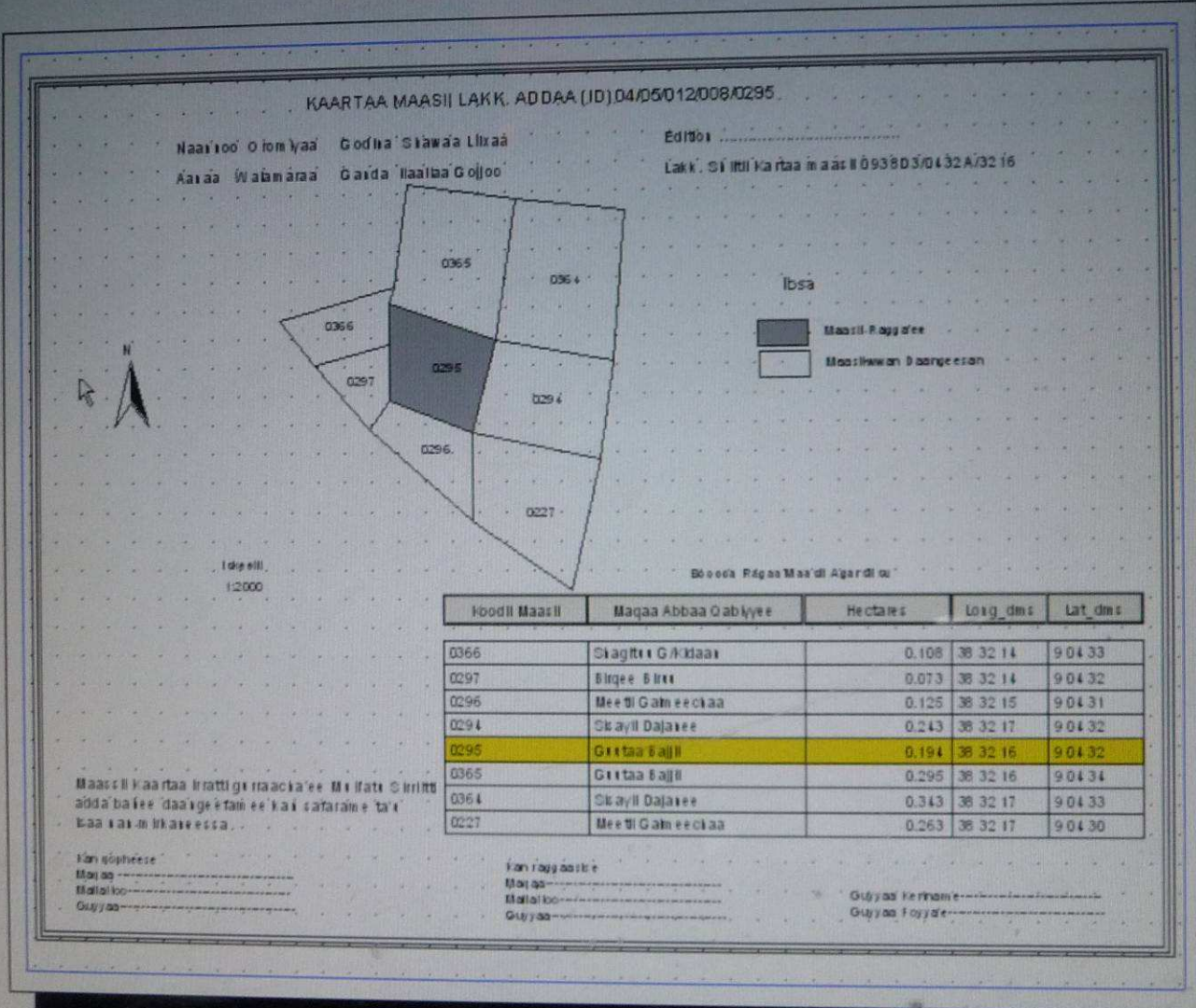




2.TIF



Layout1



Experiences

- People can read the images easily
- It is easy to get lost: GPS for orientation is a requirement – to be investigated
- In some area's boundaries are flexible
- Photo's as evidence
- Admin checks cost relatively a lot of time



Functionality

- Generate images for field work
- Generate forms for field work
- Scan images
- Vectorise
- Overlapping claims
- Overlapping tenure
- Link spatial and admin
- Holdings – groups of Parcels
- History
- Process – not modelled
- Source documents
- Data collectors

Status

- Conceptual Design
- Functional Design
- Technical Design

- Reviews to be provided

- Programming and testing

Thank you

